



**Corporate Technology  
Assessment Program**

**Melink Corporate Headquarters  
Milford, Ohio**

Melink Corporation is constantly researching and testing different types of solar photovoltaic panels to find the best value for our customers. From 2006 through 2008, Melink installed three 10kW solar arrays on our roof and between 2010 and 2011 installed an additional 7 systems on our corporate campus.



**Xunlight  
Flexible Thin Film System**

The Xunlight flexible thin film system is perfect for roofs with load issues, odd angles or contours. The system does not need a racking system and eliminates roof penetrations and is instead applied with a special adhesive, making installation faster and less expensive than traditional panels.



<b>Xunlight</b>	
<b>System Size</b>	3.1 kW
<b>Annual AC Output</b>	3,200 kWh
<b>Module Technology</b>	Flexible thin film
<b>Modules</b>	12 Xunlight 255 Watt
<b>Inverter</b>	(1) 3kW



**Solyndra  
Cylindrical Module System**

The Solyndra system consists of small, cylindrical tubes designed to capture light from 360 degrees when installed on a white reflective roof. It has its own ballasted racking system which does not penetrate the roof membrane, making it very easy to install.



<b>Solyndra</b>	
<b>System Size</b>	5.5 kW
<b>Annual AC Output</b>	6,100 kWh
<b>Module Technology</b>	Cylindrical thin film
<b>Modules</b>	32 Solyndra 173 Watt
<b>Inverter</b>	(1) 5kW

**Abound Roof Mount  
Rigid Thin Film System**

Melink installed the rooftop Abound system in mid-2010. At 5.8kW, this was the first rigid thin film system Melink constructed on their corporate campus.



<b>Melink HQ First Solar Rooftop Array</b>	
<b>System Size</b>	5.2kW
<b>Annual AC Output</b>	5,800kWh
<b>Module Technology</b>	Rigid thin film (CdTe)
<b>Modules</b>	78
<b>Inverter</b>	(1) 5kW



**About Ground Mount  
Rigid Thin Film System**

Melink completed the installation of a 25kW solar PV system adjacent to the company headquarters in late November. A fixed ground-mounted system, Melink designed and installed the system and completed final commissioning in December 2010.



<b>Melink HQ Ground-Mounted About System</b>	
System Size	25.5kW
Annual AC Output	28,582kWh
Module Technology	Rigid Thin Film (CdTe)
Modules	352
Inverter	(2) 12kW

**First Solar Roof Mount  
Rigid Thin Film System**

In early 2011, Melink installed a second rigid thin film system on their corporate headquarters rooftop. The system was installed to test against our other rooftop systems and to help the company reach its net zero energy goal.



<b>Melink HQ First Solar Rooftop Array</b>	
System Size	5.2kW
Annual AC Output	5,800kWh
Module Technology	Rigid thin film (CdTe)
Modules	78
Inverter	(1) 5kW



### Melink HQ Solar Canopy Crystalline Silicon System



Melink’s solar canopy is similar to our project at the Cincinnati Zoo. Not only does the canopy provide 12kW of power towards our energy usage, it also provides shelter for the cars parked underneath.

Melink HQ Solar Canopy	
System Size	11.8kW
Annual AC Output	13,171kWh
Module Technology	Crystalline Silicon
Modules	48
Inverter	(1) 12kW

### Ingrid Pre-Engineered PV System

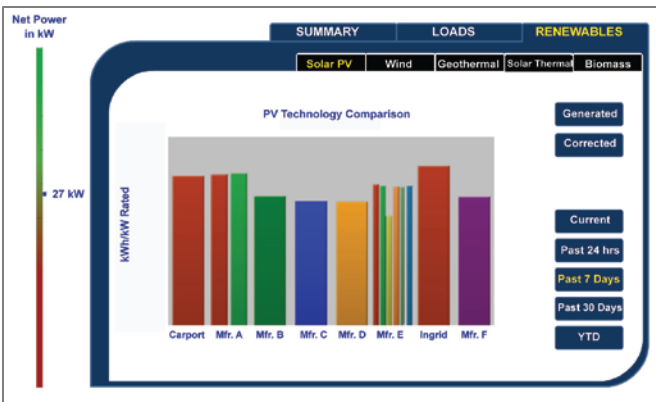
Ingrid® is the next generation of solar power. It utilizes a sleek, modular design that is mass-produced for low cost, convenience and flexibility.

The 2.1kW ground-mounted system can be installed in less than a week and offsets 10 - 50% of electrical usage for an average home or small business. It requires little maintenance and is easily expandable based on your energy needs.



Ingrid Pre-Engineered System	
System Size	(6) 2.1 kW
Annual AC Output	14,321kWh
Module Technology	Monocrystalline Silicon
Modules	(72) Melink 180kW
Inverter	(6) 2kW

### Mpower Monitoring System



Mpower allows Melink to compare production of our solar PV systems on an equal footing. Mpower adjusts for differences in system size and orientation to the sun using the latest in sensing technology. As the chart at left illustrates, all solar PV systems are not created equal.