



TEST & BALANCE REPORT

PROJECT: Melink Corporation 1234

LOCATION: 5140 River Valley Road, Milford, OH 45150

ARCHITECT: Architects LLC

MECH. ENGINEER: David Smith

GEN. CONTRACTOR: Diego Associates

PROJECT NUMBER: 071311

This is to certify that Melink Corporation has balanced the systems described herein to their optimum performance capabilities. The testing and balancing has been performed in accordance with the standard requirements and procedures of the National Environmental Balancing Bureau, and the results of the tests are herein recorded.

T & B ENGINEER: Stephen K. Melink, PE

DATE 7/13/2011



TEST AND BALANCE CONTACT INFORMATION

PROJECT: Melink Corporation 1234

DATE: 7/13/2011

LOCATION: 5140 River Valley Road, Milford, OH 45150

MECHANICAL SERVICES: N/A

Phone: N/A

E-mail: [N/A](#)

CONST. MANAGER: N/A

Phone: N/A

E-mail: [N/A](#)

SITE SUPERINTENDENT: N/A

Phone: N/A

Fax: N/A

E-mail: [N/A](#)

MECHANICAL CONTRACTOR: N/A

Phone: N/A

Fax: N/A

E-mail: [N/A](#)

MELINK TECHNICIAN: Larry Moore

Phone: (513) 641-6190

E-mail: lmoore@melinkcorp.com

MELINK ACCOUNT MANAGER: Jason Morman

Phone: (513) 965-7320

Fax: (513) 965-7350

E-mail: jmorman@melinkcorp.com

FIELD SUMMARY

PROJECT: Melink Corporation 1234

DATE: 7/13/2011

LOCATION: 5140 River Valley Road, Milford, OH 45150

This air balance report is based on actual field readings and measurements taken from the store's HVAC systems during operation. All systems were also balanced to within 95% - 110% of design unless noted otherwise. The following corrections were performed by Melink and/or the contractors on-site.

1. Arrived onsite and met with jobsite superintendent.

Upon arrival Melink met with the jobsite superintendent confirming that everything was ready for the balance and provided an updated set of prints to use during the balance.

2. RTU's / AHU's

Melink inspected the most current set of design plans. The layout and specific requirements were then noted. All HVAC systems were inspected to ensure that all components were operational. The fan systems were inspected for proper rotation, belt tension, pulley alignment, and correct voltage. The systems were tested in the cooling and heating modes. It should be noted that since the EMS system was not properly working during the scheduled test and balance; several units had to be cycled to their test mode by Melink in order to perform the air balance and verify the operation of the heating/cooling modes.

All RTUs were properly balanced where possible, and units not operating within 10% of design were proportionally balanced so when the needed speed adjustments are made the diffusers should be within design. Please reference the punch list pages in this report for a list of the units which will require a fan speed adjustment in order to achieve design airflow. Notable items per unit have been listed as follows:

RTU-5: Supply diffusers 5C and 5D are operating below design and the installed balancing dampers were verified as being full open. This item shouldn't lead to any comfort issues in the future; therefore; no further action is recommended.

RTU-7, RTU-8, RTU-11, RTU-12, RTU-15, RTU-18, RTU-19, and RTU-20: These units are operating below design but due to them operating within the recommended CFM/ton range (350-450 CFM/ton); a fan speed adjustment hasn't been recommended and no further action is required.

RTU-9: The individual airflow devices weren't included in the design prints; therefore; this units' total airflow was balanced to the airflow requirements listed in the fan schedule of the prints.

RTU-10: Supply diffusers 10A and 10G are operating below design and the installed balancing dampers were verified as being full open. This item shouldn't lead to any comfort issues in the future; therefore; no further action is recommended. It should also be noted that this unit has an additional supply diffuser installed (10O) which isn't included in the prints.

RTU-13: Supply diffusers 13E and 13F are operating below design and the installed balancing dampers were verified as being full open. This item shouldn't lead to any comfort issues in the future; therefore; no further action is recommended.

RTU-14: Supply diffuser 14D is operating below design and the installed balancing damper was verified as being full open. This item shouldn't lead to any comfort issues in the future; therefore; no further action is recommended.

FIELD SUMMARY

PROJECT: Melink Corporation 1234

DATE: 7/13/2011

LOCATION: 5140 River Valley Road, Milford, OH 45150

This air balance report is based on actual field readings and measurements taken from the store's HVAC systems during operation. All systems were also balanced to within 95% - 110% of design unless noted otherwise. The following corrections were performed by Melink and/or the contractors on-site.

3. RTU's / AHU's (continued)

RTU-22, RTU-23, and RTU-24: The design data for these units wasn't included in the design prints provided. Each unit has been balanced to the industries standard CFM/ton range of 350 to 450 CFM/ton.

RTU-29 and RTU-30: Supply diffusers 29A, 30I, and 30J weren't included in the design prints and there isn't any design data pertaining to these diffusers. Due to the fact that these airflow devices should have a positive impact on the comfort in the areas they serve; this item wasn't included in the punch list.

4. Smoke capture and building pressure.

Due to the balance being incomplete the kitchen hoods were not smoke tested and a building pressure was not recorded. Both items can be tested during the revisit at the completion of the air balance.

5. EF's

EF-2 and EF-5: Operating above design, the installed variable speed controller is at its minimum speed position, and this unit doesn't have any balancing dampers installed. This issue shouldn't lead to any comfort issues; therefore; this item wasn't included in the punch list.

EF-3 and EF-17: These units both are mounted on the side of the building and couldn't safely be accessed by Melink. The variable speed controller for each unit however was accessible and the total airflow for each unit has been properly balanced.

EF-4 and EF-12: Operating below design and its installed variable speed controller is at its maximum speed position. This issue shouldn't lead to any comfort issues; therefore; this item wasn't included in the punch list.

EF-17: There is conflicting information in the design prints pertaining to this unit. The fan schedule calls for 2020 CFM but the sum of the connected load is only 835 CFM. Do to the locations the exhaust grilles connected to this unit are located; this unit was balanced to the airflow values as they appear in the diffuser layout section of the prints.

EF-19: There is conflicting information in the design prints pertaining to this unit. The fan schedule calls for 1150 CFM but the sum of the connected load is only 300 CFM. Do to the location the exhaust grille connected to this unit is located; this unit was balanced to the airflow values as they appear in the diffuser layout section of the prints.

The motor horse power rating installed for EF-8 is a ½ and the design plans call for a 2 hp motor to be installed. The unit was able to meet design air flow and no changes are needed.

6. Follow-up

Due to the variety of issues affecting the balance a revisit is recommended to complete the balance.

PUNCH LIST

PROJECT: Melink Corporation 1234

DATE: 7/13/2011

LOCATION: 5140 River Valley Road, Milford, OH 45150

The following list details the remaining deficiencies of the store's HVAC and exhaust systems. These corrections are necessary to comply with the design specifications.

Contractor Responsible

- 1. Apply power to each exhaust fan.** **Electrical**
The following exhaust fans are inoperable: EF-1, EF-9, EF-10, EF-14 and EFH2.
- 2. Apply permanent power to RTU-6.** **Electrical**
RTU-6 doesn't have any permanent power running to it.
- 3. Further investigate RTU-30's low airflow.** **Mechanical**
RTU-30's total airflow was measured at around 20% of design. An airflow measurement such as this is usually an indication of some sort of restriction and/or airflow leak.
- 4. Further investigate RTU-3's low airflow.** **Mechanical**
RTU-3 is operating below design and its installed motor is operating very closely to full load amperage (FLA). Increasing this units' fan speed any further could cause damage to the motor. This issue will need to be further investigated in order to maximize the comfort in the areas served by this unit.
- 5. Further investigate the operation of TF-1 (transfer fan).** **Electrical**
The transfer fan located in the bakery area is inoperable.
- 6. Further investigate the operation of AHU-1 and AHU-2.** **Mechanical**
AHU-1 and AHU-2 both were inoperable at the time of the air balance. Facilities maintenance was contacted during the visit and they were sending a run command to each unit but neither unit was running. This issue will need to be further investigated and resolved in order to complete the air balance.
- 7. Verify the operation of the building management system.** **Novar**
At the beginning of the air balance facilities management was contacted in order to force each unit to run continuously. Most of the units came on but a considerable amount of the units still wouldn't cycle on and had to be jumped out for balancing purposes. This could be a sign of issues with the controls system. It should also be noted that the temperature outside had considerably dropped towards the end of the balance and most of the units never cycled to the heat mode. These issues could possibly be circumstantial, but it is still recommended to verify the operation of the controls system in an effort to maximize the efficiency of the units.
- 8. Repair RTU-24's condensate drain.** **Plumbing**
RTU-24's p-trap is damaged and will need to be repaired in order to avoid buildup inside the units.
- 9. Replace RTU-24's O/A damper actuator.** **Mechanical**
RTU-24's O/A damper was accidentally damaged by Melink during the air balance; therefore; any costs associated with repairing this units outside air damper actuator will be covered by Melink. Please contact our retail team at (513) 965-7300 with any questions or concerns.

Melink recommends revisiting this store due to the deficiencies listed above.

Revisit necessary? Yes 30-60 days after opening? Yes Before opening? NA

Project Manager: Please contact Melink in order to authorize the revisit.

PUNCH LIST

PROJECT: Melink Corporation 1234

DATE: 7/13/2011

LOCATION: 5140 River Valley Road, Milford, OH 45150

The following list details the remaining deficiencies of the store's HVAC and exhaust systems. These corrections are necessary to comply with the design specifications.

Contractor Responsible

10. Perform the following fan speed adjustments.

Mechanical

The following units are operating either above or below design and will require fan speed adjustments in order to achieve closer to design airflow. The units needing adjustments along with a recommended pulley size/target RPM have been listed as follows:

- RTU-2: Target 1168 RPM (1VP44 x 7/8" sized pulley)
- RTU-17: Target 937 RPM (BK70H x 1" sized pulley)
- EF-6: Target 974 RPM (AL84 x 3/4" sized pulley)

It should be noted that motor amperages will need to be verified whenever increasing fan speeds in order to avoid motor issues. Also that the installed motor for EF-6 is not called for on the design plans, a 1/4th horse power motor is called for and a 1/3rd is installed. The unit will be able to be adjusted to design and no changes are needed.

11. Further investigate EF-3 and EF-12's low airflow.

Mechanical

EF-3 is operating below design and the installed speed controller is at its maximum speed position. This issue will need to be further investigated and resolved. It should be noted that there are two separate 90 degree turns in this units duct work at this units' drop which may or may not be the cause of this issue. EF-12 is also operating below design and its speed controller is at its maximum speed position as well.

12. Provide design data for the food tenant area.

Mechanical

Melink wasn't provided with any design information pertaining to the equipment located in the food tenant area.

13. Properly mount EFH1's (food tenant) disconnect switch.

Mechanical

This units disconnect switch is located underneath its dome, isn't properly mounted, and freely moves during operation. The disconnect switch will need to be properly mounted in order to avoid permanent damage to the unit.

14. Replace RTU-12's fan belt.

Mechanical

RTU-12's fan belt is visibly worn and needs to be replaced.

15. Further investigate the low supply airflow in Exam Room #2.

Mechanical

The supply diffuser serving Exam Room #2 is operating at 37% of design. The installed balancing damper handle is in the full opened position. It is possible that even though the damper handle is in the full opened position; the actual damper could still be closed. There is also a 90 degree turn at the diffuser. This issue will need to be resolved in order to improve the comfort in the exam room.

Melink recommends revisiting this store due to the deficiencies listed above.

Revisit necessary? Yes 30-60 days after opening? Yes Before opening? NA

Project Manager: Please contact Melink in order to authorize the revisit.

RECOMMENDATIONS

PROJECT: Melink Corporation 1234

DATE: 7/13/2011

LOCATION: 5140 River Valley Road, Milford, OH 45150

The following list details the recommendations for improving comfort and energy efficiency. These items are not requirements of the design specifications.

1. It is recommended to remove and cap the extra exhaust fan.

There is an extra exhaust fan which was not on the schedule. This fan is labeled as EF-20 and serves the janitors closet but is not used. This fan should be removed and the curb sealed.

PHOTOS

PROJECT: Melink Corporation 1234

DATE: 7/13/2011

LOCATION: 5140 River Valley Road, Milford, OH 45150



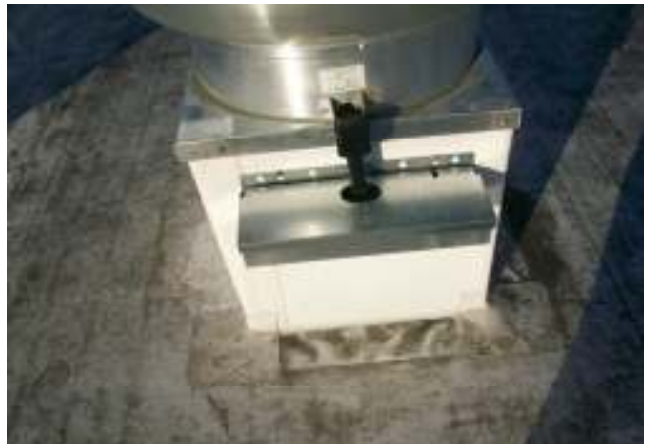
Picture 1: EFH1's Disconnect Switch



Picture 2: Units Are Labeled



Picture 3: Hinges Installed



Picture 4: Grease Traps Installed



Picture 5: Gas Lines Painted



Picture 6: Drain Lines Properly Installed

ROOFTOP INSPECTION

PROJECT: Melink Corporation 1234

DATE: 7/13/2011

LOCATION: 5140 River Valley Road, Milford, OH 45150

DESCRIPTION

STATUS

STANDARD

- Verify proper unit locations
- Verify units marked for easy identification

RTU														
1	2	3	4	5	6	7	8	9	10	11	12	13	14	15
√	√	√	√	√	√	√	√	√	√	√	√	√	√	√
√	√	√	√	√	√	√	√	√	√	√	√	√	√	√

Inspect units

- Unit sealed & properly seated to roof curb
- Unit nameplate data matches design
- Motor nameplate data matches design
- No unusual vibration or noise
- All filters installed, clean & secure
- Condenser coil clean & free of damage
- Evaporator or coil clean & free of damage
- Gas cocks turned on
- Gas pipe painted
- Condensate drain lines properly installed
- P-Traps properly installed
- Drain lines properly sloped

√	√	√	√	√	√	√	√	√	√	√	√	√	√	√
√	√	√	√	√	√	√	√	√	√	√	√	√	√	√
NA	NA	NA	NA	NA	NA	NA	NA	NA	NA	NA	NA	NA	NA	NA
√	√	√	√	√	√	√	√	√	√	√	√	√	√	√
√	√	√	√	√	√	√	√	√	√	√	√	√	√	√
√	√	√	√	√	√	√	√	√	√	√	√	√	√	√
√	√	√	√	√	√	√	√	√	√	√	√	√	√	√
√	√	√	√	√	√	√	√	√	√	√	√	√	√	√
√	√	√	√	√	√	√	√	√	√	√	√	√	√	√
√	√	√	√	√	√	√	√	√	√	√	√	√	√	√
√	√	√	√	√	√	√	√	√	√	√	√	√	√	√
√	√	√	√	√	√	√	√	√	√	√	√	√	√	√
√	√	√	√	√	√	√	√	√	√	√	√	√	√	√
√	√	√	√	√	√	√	√	√	√	√	√	√	√	√
√	√	√	√	√	√	√	√	√	√	√	√	√	√	√
√	√	√	√	√	√	√	√	√	√	√	√	√	√	√

Remove unit access panels

- Panels open freely & fully
- Panels latch securely
- Belts properly tensioned & free of damage
- Pulleys properly aligned
- Blower wheel clean & free of damage
- Control transformer wired for correct voltage

√	√	√	√	√	√	√	√	√	√	√	√	√	√	√
√	√	√	√	√	√	√	√	√	√	√	√	√	√	√
√	√	√	√	√	√	√	√	√	√	√	√	√	√	√
√	√	√	√	√	√	√	√	√	√	√	√	√	√	√
√	√	√	√	√	√	√	√	√	√	√	√	√	√	√
√	√	√	√	√	√	√	√	√	√	√	√	√	√	√

Check disconnect switches & covers

- Verify on/off disconnects work
- Verify voltage input correct
- Verify switch covers installed

√	√	√	√	√	√	√	√	√	√	√	√	√	√	√
√	√	√	√	√	√	√	√	√	√	√	√	√	√	√
√	√	√	√	√	√	√	√	√	√	√	√	√	√	√

Power-on diagnostic check

- Fans operating in correct rotation
- Compressors operating in correct rotation
- No unusual vibration or noise

√	√	√	√	√	√	√	√	√	√	√	√	√	√	√
√	√	√	√	√	√	√	√	√	√	√	√	√	√	√
√	√	√	√	√	√	√	√	√	√	√	√	√	√	√

Outside air (OA) dampers

- Outside air dampers installed & operational
- Ensure slightly positive building pressure
- Position marked for reference
- Sticker affixed to unit to preclude tampering

√	√	√	√	√	√	√	√	√	√	√	√	√	√	√
NA	NA	NA	NA	NA	NA	NA	NA	NA	NA	NA	NA	NA	NA	NA
√	√	√	√	√	√	√	√	√	√	√	√	√	√	√
√	√	√	√	√	√	√	√	√	√	√	√	√	√	√

ROOFTOP INSPECTION

PROJECT: Melink Corporation 1234

DATE: 7/13/2011

LOCATION: 5140 River Valley Road, Milford, OH 45150

DESCRIPTION

STATUS

STANDARD

- Verify proper unit locations
- Verify units marked for easy identification

	RTU														
	16	17	18	19	20	21	22	23	24	25	26	27	28	29	30
Verify proper unit locations	√	√	√	√	√	√	√	√	√	√	√	√	√	√	√
Verify units marked for easy identification	√	√	√	√	√	√	√	√	√	√	√	√	√	√	√

Inspect units

- Unit sealed & properly seated to roof curb
- Unit nameplate data matches design
- Motor nameplate data matches design
- No unusual vibration or noise
- All filters installed, clean & secure
- Condenser coil clean & free of damage
- Evaporator or coil clean & free of damage
- Gas cocks turned on
- Gas pipe painted
- Condensate drain lines properly installed
- P-Traps properly installed
- Drain lines properly sloped

√	√	√	√	√	√	√	√	√	√	√	√	√	√	√	√
√	√	√	√	√	√	√	√	√	√	√	√	√	√	√	√
NA	NA	NA	NA	NA	NA	NA	NA	NA	NA	NA	NA	NA	NA	NA	NA
√	√	√	√	√	√	√	√	√	√	√	√	√	√	√	√
√	√	√	√	√	√	√	√	√	√	√	√	√	√	√	√
√	√	√	√	√	√	√	√	√	√	√	√	√	√	√	√
√	√	√	√	√	√	√	√	√	√	√	√	√	√	√	√
√	√	√	√	√	√	√	√	√	√	√	√	√	√	√	√
√	√	√	√	√	√	√	√	√	√	√	√	√	√	√	√
√	√	√	√	√	√	√	√	√	√	√	√	√	√	√	√
√	√	√	√	√	√	√	√	√	√	√	√	√	√	√	√
√	√	√	√	√	√	√	√	√	√	√	√	√	√	√	√
√	√	√	√	√	√	√	√	√	√	√	√	√	√	√	√
√	√	√	√	√	√	√	√	√	√	√	√	√	√	√	√
√	√	√	√	√	√	√	√	√	√	√	√	√	√	√	√
√	√	√	√	√	√	√	√	√	√	√	√	√	√	√	√
√	√	√	√	√	√	√	√	√	√	√	√	√	√	√	√
√	√	√	√	√	√	√	√	√	√	√	√	√	√	√	√
√	√	√	√	√	√	√	√	√	√	√	√	√	√	√	√
√	√	√	√	√	√	√	√	√	√	√	√	√	√	√	√
√	√	√	√	√	√	√	√	√	√	√	√	√	√	√	√
√	√	√	√	√	√	√	√	√	√	√	√	√	√	√	√
√	√	√	√	√	√	√	√	√	√	√	√	√	√	√	√
√	√	√	√	√	√	√	√	√	√	√	√	√	√	√	√
√	√	√	√	√	√	√	√	√	√	√	√	√	√	√	√
√	√	√	√	√	√	√	√	√	√	√	√	√	√	√	√
√	√	√	√	√	√	√	√	√	√	√	√	√	√	√	√
√	√	√	√	√	√	√	√	√	√	√	√	√	√	√	√
√	√	√	√	√	√	√	√	√	√	√	√	√	√	√	√
√	√	√	√	√	√	√	√	√	√	√	√	√	√	√	√
√	√	√	√	√	√	√	√	√	√	√	√	√	√	√	√
√	√	√	√	√	√	√	√	√	√	√	√	√	√	√	√
√	√	√	√	√	√	√	√	√	√	√	√	√	√	√	√
√	√	√	√	√	√	√	√	√	√	√	√	√	√	√	√
√	√	√	√	√	√	√	√	√	√	√	√	√	√	√	√
√	√	√	√	√	√	√	√	√	√	√	√	√	√	√	√

Remove unit access panels

- Panels open freely & fully
- Panels latch securely
- Belts properly tensioned & free of damage
- Pulleys properly aligned
- Blower wheel clean & free of damage
- Control transformer wired for correct voltage

√	√	√	√	√	√	√	√	√	√	√	√	√	√	√	√
√	√	√	√	√	√	√	√	√	√	√	√	√	√	√	√
√	√	√	√	√	√	√	√	√	√	√	√	√	√	√	√
√	√	√	√	√	√	√	√	√	√	√	√	√	√	√	√
√	√	√	√	√	√	√	√	√	√	√	√	√	√	√	√
√	√	√	√	√	√	√	√	√	√	√	√	√	√	√	√

Check disconnect switches & covers

- Verify on/off disconnects work
- Verify voltage input correct
- Verify switch covers installed

√	√	√	√	√	√	√	√	√	√	√	√	√	√	√	√
√	√	√	√	√	√	√	√	√	√	√	√	√	√	√	√
√	√	√	√	√	√	√	√	√	√	√	√	√	√	√	√

Power-on diagnostic check

- Fans operating in correct rotation
- Compressors operating in correct rotation
- No unusual vibration or noise

√	√	√	√	√	√	√	√	√	√	√	√	√	√	√	√
√	√	√	√	√	√	√	√	√	√	√	√	√	√	√	√
√	√	√	√	√	√	√	√	√	√	√	√	√	√	√	√

Outside air (OA) dampers

- Outside air dampers installed & operational
- Ensure slightly positive building pressure
- Position marked for reference
- Sticker affixed to unit to preclude tampering

√	√	√	√	√	√	√	√	√	NA	√	√	√	√	√	√
NA	NA	NA	NA	NA	NA	NA	NA	NA	NA	NA	NA	NA	NA	NA	NA
√	√	√	√	√	√	√	√	√	NA	√	√	√	√	√	√
√	√	√	√	√	√	√	√	√	√	√	√	√	√	√	√

ROOFTOP INSPECTION

PROJECT: Melink Corporation 1234

DATE: 7/13/2011

LOCATION: 5140 River Valley Road, Milford, OH 45150

DESCRIPTION

STATUS

STANDARD

- Verify proper unit locations
- Verify units marked for easy identification

RTU										AHU			
										1	2		
										√	√		
										√	√		

Inspect units

- Unit sealed & properly seated to roof curb
- Unit nameplate data matches design
- Motor nameplate data matches design
- No unusual vibration or noise
- All filters installed, clean & secure
- Condenser coil clean & free of damage
- Evaporator or coil clean & free of damage
- Gas cocks turned on
- Gas pipe painted
- Condensate drain lines properly installed
- P-Traps properly installed
- Drain lines properly sloped

										√	√		
										NA	NA		
										NA	NA		
										√	√		
										√	√		
										√	√		
										√	√		
										√	√		
										√	√		
										√	√		

Remove unit access panels

- Panels open freely & fully
- Panels latch securely
- Belts properly tensioned & free of damage
- Pulleys properly aligned
- Blower wheel clean & free of damage
- Control transformer wired for correct voltage

										√	√		
										√	√		
										√	√		
										√	√		
										√	√		
										√	√		

Check disconnect switches & covers

- Verify on/off disconnects work
- Verify voltage input correct
- Verify switch covers installed

										√	√		
										√	√		
										√	√		

Power-on diagnostic check

- Fans operating in correct rotation
- Compressors operating in correct rotation
- No unusual vibration or noise

										NA	NA		
										NA	NA		
										NA	NA		

Outside air (OA) dampers

- Outside air dampers installed & operational
- Ensure slightly positive building pressure
- Position marked for reference
- Sticker affixed to unit to preclude tampering

										NA	NA		
										NA	NA		
										NA	NA		
										√	√		

ROOFTOP INSPECTION

PROJECT: Melink Corporation 1234

DATE: 7/13/2011

LOCATION: 5140 River Valley Road, Milford, OH 45150

DESCRIPTION

STATUS

STANDARD

- Verify proper unit locations
- Verify units marked for easy identification

															EF
1	2	3	4	5	6	7	8	9	10	11	12	13	14	15	
√	√	√	√	√	√	√	√	√	√	√	√	√	√	√	
√	√	√	√	√	√	√	√	√	√	√	√	√	√	√	

Inspect units

- Unit sealed & properly seated to roof curb
- Unit nameplate data matches design
- Motor nameplate data matches design
- No unusual vibration or noise

√	√	√	√	√	√	√	√	√	√	√	√	√	√	√
NA	NA	NA	NA	NA	NA	NA	NA	NA	NA	NA	NA	NA	NA	NA
NA	NA	NA	NA	NA	NA	X	NA	X	NA	NA	NA	NA	NA	NA
√	√	√	√	√	√	√	√	√	√	√	√	√	√	√

Exhaust fans (EF)

- Transition from exhaust duct to fan installed
- Duct continuously welded & liquid tight
- Fan hinged & opened for easy access
- Grease traps properly installed

NA	NA	NA	NA	NA	NA	NA	NA	NA	NA	NA	NA	NA	NA	NA
NA	NA	NA	NA	NA	NA	NA	NA	NA	NA	NA	NA	NA	NA	NA
NA	NA	NA	NA	NA	NA	NA	NA	NA	NA	NA	NA	NA	NA	NA
NA	NA	NA	NA	NA	NA	NA	NA	NA	NA	NA	NA	NA	NA	NA

Remove unit access panels

- Panels open freely & fully
- Panels latch securely
- Belts properly tensioned & free of damage
- Pulleys properly aligned
- Blower wheel clean & free of damage

√	√	√	√	√	√	√	√	√	√	√	√	√	√	√
√	√	√	√	√	√	√	√	√	√	√	√	√	√	√
NA	NA	NA	NA	NA	√	NA	NA	NA	NA	NA	NA	NA	√	NA
NA	NA	NA	NA	NA	√	NA	NA	NA	NA	NA	NA	NA	√	NA
√	√	√	√	√	√	√	√	√	√	√	√	√	√	√

Check disconnect switches & covers

- Verify on/off disconnects work
- Verify voltage input correct
- Verify switch covers installed

√	√	√	√	√	√	√	√	√	√	√	√	√	√	√
√	√	√	√	√	√	√	√	√	√	√	√	√	√	√
√	√	√	√	√	√	√	√	√	√	√	√	√	√	√

Power-on diagnostic check

- Fans operating in correct rotation
- No unusual vibration or noise

√	√	√	√	√	√	√	√	√	√	√	√	√	√	√
√	√	√	√	√	√	√	√	√	√	√	√	√	√	√

ROOFTOP INSPECTION

PROJECT: Melink Corporation 1234

DATE: 7/13/2011

LOCATION: 5140 River Valley Road, Milford, OH 45150

DESCRIPTION

STATUS

STANDARD

- Verify proper unit locations
- Verify units marked for easy identification

EF																		
16	17	18	19	H1	H2	H3	F1	F2										
√	√	√	√	√	√	√	√	√	√									
√	√	√	√	√	√	√	√	√	√									

Inspect units

- Unit sealed & properly seated to roof curb
- Unit nameplate data matches design
- Motor nameplate data matches design
- No unusual vibration or noise

√	√	√	√	√	√	√	√	√	√									
NA	NA	NA	NA	NA	NA	NA	NA	NA	NA									
NA	NA	NA	NA	NA	NA	NA	NA	NA	NA									
√	√	√	√	√	√	√	√	√	√									

Exhaust fans (EF)

- Transition from exhaust duct to fan installed
- Duct continuously welded & liquid tight
- Fan hinged & opened for easy access
- Grease traps properly installed

NA	NA	NA	NA	√	√	√	√	√	√									
NA	NA	NA	NA	√	√	√	√	√	√									
NA	NA	NA	NA	√	√	√	√	√	√									
NA	NA	NA	NA	√	√	√	√	√	√									

Remove unit access panels

- Panels open freely & fully
- Panels latch securely
- Belts properly tensioned & free of damage
- Pulleys properly aligned
- Blower wheel clean & free of damage

√	√	√	√	√	√	√	√	√	√									
√	√	√	√	√	√	√	√	√	√									
NA	NA	NA	NA	√	√	√	√	√	√									
NA	NA	NA	NA	√	√	√	√	√	√									
√	√	√	√	√	√	√	√	√	√									

Check disconnect switches & covers

- Verify on/off disconnects work
- Verify voltage input correct
- Verify switch covers installed

√	√	√	√	√	√	√	√	√	√									
√	√	√	√	√	√	√	√	√	√									
√	√	√	√	√	√	√	√	√	√									

Power-on diagnostic check

- Fans operating in correct rotation
- No unusual vibration or noise

√	√	√	√	√	√	√	√	√	√									
√	√	√	√	√	√	√	√	√	√									

ABOVE CEILING INSPECTION

PROJECT: Melink Corporation 1234

DATE: 7/13/2011

LOCATION: 5140 River Valley Road, Milford, OH 45150

DESCRIPTION

STATUS

STANDARD

Supply duct system

- Ductwork installed as per design
- All volume dampers properly installed
- Dampers accessible & operable
- Installed diffusers match design
- Ductwork properly covered w/ insulation, insulation is secure

RTU														
1	2	3	4	5	6	7	8	9	10	11	12	13	14	15
√	√	√	√	√	√	√	√	√	√	√	√	√	√	√
√	√	√	√	√	√	√	√	√	√	√	√	√	√	√
√	√	√	√	√	√	√	√	√	√	√	√	√	√	√
√	√	√	√	√	√	√	√	√	√	√	√	√	√	√
√	√	√	√	√	√	√	√	√	√	√	√	√	√	√

- Ductwork installed as per design
- All volume dampers properly installed
- Dampers accessible & operable
- Installed diffusers match design
- Ductwork properly covered w/ insulation, insulation is secure

RTU														
16	17	18	19	20	21	22	23	24	25	26	27	28	29	30
√	√	√	√	√	√	√	√	√	√	√	√	√	√	√
√	√	√	√	√	√	√	√	√	√	√	√	√	√	√
√	√	√	√	√	√	√	√	√	√	√	√	√	√	√
√	√	√	√	√	√	√	√	√	√	√	√	√	√	√
√	√	√	√	√	√	√	√	√	√	√	√	√	√	√

- Ductwork installed as per design
- All volume dampers properly installed
- Dampers accessible & operable
- Installed diffusers match design
- Ductwork properly covered w/ insulation, insulation is secure

RTU										AHU				
										1	2			
										√	√			
										√	√			
										√	√			
										√	√			
										√	√			

STANDARD

Exhaust duct system

- Cleanouts are installed where applicable
- Firewrap installed on duct as specified
- Horizontal duct sloped as specified
- Welds appear to be liquid tight

EF														
1	2	3	4	5	6	7	8	9	10	11	12	13	14	15
NA	NA	NA	NA	NA	NA	NA	NA	NA	NA	NA	NA	NA	NA	NA
NA	NA	NA	NA	NA	NA	NA	NA	NA	NA	NA	NA	NA	NA	NA
NA	NA	NA	NA	NA	NA	NA	NA	NA	NA	NA	NA	NA	NA	NA
NA	NA	NA	NA	NA	NA	NA	NA	NA	NA	NA	NA	NA	NA	NA

Exhaust duct system

- Cleanouts are installed where applicable
- Firewrap installed on duct as specified
- Horizontal duct sloped as specified
- Welds appear to be liquid tight

EF														
16	17	18	19	H1	H2	H3	F1	F2						
NA	NA	NA	NA	√	√	√	√	√						
NA	NA	NA	NA	√	√	√	√	√						
NA	NA	NA	NA	√	√	√	√	√						
NA	NA	NA	NA	√	√	√	√	√						

BELOW CEILING INSPECTION

PROJECT: Melink Corporation 1234

DATE: 7/13/2011

LOCATION: 5140 River Valley Road, Milford, OH 45150

DESCRIPTION

STATUS

STANDARD

Thermostats

- Remote sensor installed in correct location
- Unit was cycled to verify proper operation
- Heating mode tested satisfactorily
- Cooling mode tested satisfactorily

RTU														
1	2	3	4	5	6	7	8	9	10	11	12	13	14	15
√	√	√	√	√	√	√	√	√	√	√	√	√	√	√
√	√	√	√	√	√	√	√	√	√	√	√	√	√	√
√	√	√	√	√	√	√	√	√	√	√	√	√	√	√
√	√	√	√	√	√	√	√	√	√	√	√	√	√	√

Thermostats

- Remote sensor installed in correct location
- Unit was cycled to verify proper operation
- Heating mode tested satisfactorily
- Cooling mode tested satisfactorily

RTU														
16	17	18	19	20	21	22	23	24	25	26	27	28	29	30
√	√	√	√	√	√	√	√	√	√	√	√	√	√	√
√	√	√	√	√	√	√	√	√	√	√	√	√	√	√
√	√	√	√	√	√	√	√	√	√	√	√	√	√	√
√	√	√	√	√	√	√	√	√	√	√	√	√	√	√

Thermostats

- Remote sensor installed in correct location
- Unit was cycled to verify proper operation
- Heating mode tested satisfactorily
- Cooling mode tested satisfactorily

RTU														

Thermostats

- Remote sensor installed in correct location
- Unit was cycled to verify proper operation
- Heating mode tested satisfactorily
- Cooling mode tested satisfactorily

RTU										AHU				
										1	2			
										√	√			
										NA	NA			
										NA	NA			
										NA	NA			

STANDARD

Exhaust hoods

- Grease cups are installed
- All grease filters are installed
- Filters are of correct type & size
- Cooking appliances are operating
- Cooking appliances located under hoods
- Smoke capture is satisfactory

KH										
H1	H2	H3	F1	F2						
√	√	√	√	√						
√	√	√	√	√						
√	√	√	√	√						
√	√	√	√	√						
√	√	√	√	√						
√	X	√	√	√						

ROOFTOP UNITS (RTU) DATA

PROJECT: Melink Corporation 1234

DATE: 7/13/2011

LOCATION: 5140 River Valley Road, Milford, OH 45150

RTU-2 Food Tenant

DESIGN DATA

CAPACITY (TONS)	5
EXTERNAL SP	N/A
MODEL NO.	N/A
FAN HP	N/A
VOLTS/PHASE	NA
CFM PER TON	400

EQUIP. DATA

UNIT MFR.	Lennox
MODEL NO.	LGE060H43H2G
SERIAL NO.	5605M10309
CATALOG NO.	A6303
RATED TONS	5
FAN MOTOR	Emerson
HP	1 1/2
RPM	1725
VOLTS/PHASE	460/3
FLA	2.5
MOTOR SHEAVE	4" x 7/8"
FAN SHEAVE	AK64 x 1"
BELT(S)	AX46

TEST DATA

INITIAL RPM	1016
FINAL RPM	1016
INITIAL OPER. AMPS	1.4
FINAL OPER. AMPS	1.4
VOLTS	480
CFM PER TON	319
VFD OPER HZ (MAX)	N/A
IOP DAMPER (OA)%	N/A

STATIC PROFILE

RETURN SP	0.234"
FAN SUCTION SP	0.594"
FAN DISCHARGE SP	0.117"
FILTER/COIL SP	0.36"
ACT EXTERNAL SP	0.351"
TOTAL FAN SP	0.711"

NO.	AREA SERVED	TYPE	DESIGN	PRELIM.	FINAL
2A	Food Tenant Seaing	4-Way	N/A	356	356
2B	Food Tenant Seaing	4-Way	N/A	333	333
2C	Food Tenant Seaing	4-Way	N/A	307	307
2D	Food Tenant Seaing	4-Way	N/A	275	275
2E	Food Tenant Seaing	4-Way	N/A	322	322

R2A	Food Tenant Seating	Return Grille	1500	1593	1171	78%

	DESIGN	PRELIM.	FINAL	
SUPPLY	2000	1593	1593	80%
RETURN	1500		1171	78%
OUTSIDE AIR	500		422	84%
%OUTSIDE AIR	25%		26%	

ROOFTOP UNITS (RTU) DATA

PROJECT: Melink Corporation 1234

DATE: 7/13/2011

LOCATION: 5140 River Valley Road, Milford, OH 45150

RTU-3 *Optical Sales*

DESIGN DATA

CAPACITY (TONS)	3
EXTERNAL SP	N/A
MODEL NO.	N/A
FAN HP	N/A
VOLTS/PHASE	NA
CFM PER TON	400

EQUIP. DATA

UNIT MFR.	Lennox
MODEL NO.	LGE036H4BH2G
SERIAL NO.	5605M01173
CATALOG NO.	A6301
RATED TONS	3
FAN MOTOR	Emerson
HP	1 1/2
RPM	1725
VOLTS/PHASE	460/3
FLA	1.5
MOTOR SHEAVE	3" x 7/8"
FAN SHEAVE	AK64 x 1"
BELT(S)	AX44

TEST DATA

INITIAL RPM	1280
FINAL RPM	1280
INITIAL OPER. AMPS	1.3
FINAL OPER. AMPS	1.3
VOLTS	477
CFM PER TON	280
VFD OPER HZ (MAX)	N/A
IOP DAMPER (OA)%	N/A

STATIC PROFILE

RETURN SP	0.107"
FAN SUCTION SP	0.296"
FAN DISCHARGE SP	0.064"
FILTER/COIL SP	0.189"
ACT EXTERNAL SP	0.171"
TOTAL FAN SP	0.36"

NO.	AREA SERVED	TYPE	DESIGN	PRELIM.	FINAL	
3A	Optical Sales	4-Way	300	239	239	80%
3B	Optical Sales	4-Way	300	190	190	63%
3C	Optical Sales	4-Way	300	207	207	69%
3D	Optical Sales	4-Way	300	205	205	68%

R3A	Optical	Return Grille	1020	841	699	69%
-----	---------	---------------	------	-----	-----	-----

	DESIGN	PRELIM.	FINAL	
SUPPLY	1200	841	841	70%
RETURN	1020		699	69%
OUTSIDE AIR	180		142	79%
%OUTSIDE AIR	15%		17%	

ROOFTOP UNITS (RTU) DATA

PROJECT: Melink Corporation 1234

DATE: 7/13/2011

LOCATION: 5140 River Valley Road, Milford, OH 45150

RTU-4 *Optical Exam*

DESIGN DATA

CAPACITY (TONS)	3
EXTERNAL SP	N/A
MODEL NO.	N/A
FAN HP	N/A
VOLTS/PHASE	NA
CFM PER TON	400

EQUIP. DATA

UNIT MFR.	Lennox
MODEL NO.	LGE036H4BH2G
SERIAL NO.	5605M01174
CATALOG NO.	A6301
RATED TONS	3
FAN MOTOR	Emerson
HP	1 1/2
RPM	1725
VOLTS/PHASE	460/3
FLA	2.5
MOTOR SHEAVE	3" x 7/8"
FAN SHEAVE	AK64 x 1"
BELT(S)	AX44

TEST DATA

INITIAL RPM	728
FINAL RPM	728
INITIAL OPER. AMPS	1.3
FINAL OPER. AMPS	1.3
VOLTS	477
CFM PER TON	405
VFD OPER HZ (MAX)	N/A
IOP DAMPER (OA)%	N/A

STATIC PROFILE

RETURN SP	0.129"
FAN SUCTION SP	0.304"
FAN DISCHARGE SP	0.079"
FILTER/COIL SP	0.175"
ACT EXTERNAL SP	0.208"
TOTAL FAN SP	0.383"

NO.	AREA SERVED	TYPE	DESIGN	PRELIM.	FINAL	
4A	Exam #2	4-Way	175	64	64	37%
4B	Pretest	4-Way	125	113	113	90%
4C	Reception	4-Way	125	175	175	140%
4D	Contacts	4-Way	150	190	190	127%
4E	Adjust	4-Way	175	204	204	117%
4F	Waiting	4-Way	275	282	282	103%
4G	Exam #1	4-Way	175	187	187	107%

R4A	Optical	Return Grille	1020	1215	1052	103%
-----	---------	---------------	------	------	------	------

	DESIGN	PRELIM.	FINAL	
SUPPLY	1200	1215	1215	101%
RETURN	1020		1052	103%
OUTSIDE AIR	180		163	91%
%OUTSIDE AIR	15%		13%	

ROOFTOP UNITS (RTU) DATA

PROJECT: Melink Corporation 1234

DATE: 7/13/2011

LOCATION: 5140 River Valley Road, Milford, OH 45150

RTU-5 Customer Service

DESIGN DATA

CAPACITY (TONS)	5
EXTERNAL SP	N/A
MODEL NO.	N/A
FAN HP	N/A
VOLTS/PHASE	NA
CFM PER TON	400

EQUIP. DATA

UNIT MFR.	Lennox
MODEL NO.	LGE060H4BH2G
SERIAL NO.	5605L05562
CATALOG NO.	A6303
RATED TONS	5
FAN MOTOR	Emerson
HP	1 1/2
RPM	1725
VOLTS/PHASE	460/3
FLA	2.5
MOTOR SHEAVE	4" x 7/8"
FAN SHEAVE	AK64 x 1"
BELT(S)	AX46

TEST DATA

INITIAL RPM	1022
FINAL RPM	1022
INITIAL OPER. AMPS	1.6
FINAL OPER. AMPS	1.6
VOLTS	476
CFM PER TON	386
VFD OPER HZ (MAX)	N/A
IOP DAMPER (OA)%	N/A

STATIC PROFILE

RETURN SP	0.228"
FAN SUCTION SP	0.543"
FAN DISCHARGE SP	0.286"
FILTER/COIL SP	0.315"
ACT EXTERNAL SP	0.514"
TOTAL FAN SP	0.829"

NO.	AREA SERVED	TYPE	DESIGN		PRELIM. FINAL		
5A	Customer Service	4-Way	230	286	206		90%
5B	Customer Service	4-Way	230	244	214		93%
5C	Return Storage	4-Way	230	34	187		81%
5D	Customer Service	4-Way	230	188	188		82%
5E	Customer Service	4-Way	230	265	234		102%
5F	Customer Service	4-Way	230	219	219		95%
5G	Storage	4-Way	195	218	214		110%
5H	Photo Lab	4-Way	230	258	251		109%
5I	Storage	4-Way	195	222	215		110%

R5A	Customer Service	Return Grille	1720	1934	1665		97%

	DESIGN		PRELIM. FINAL	
SUPPLY	2000	1934	1928	96%
RETURN	1720		1665	97%
OUTSIDE AIR	280		263	94%
%OUTSIDE AIR	14%		14%	

ROOFTOP UNITS (RTU) DATA

PROJECT: Melink Corporation 1234

DATE: 7/13/2011

LOCATION: 5140 River Valley Road, Milford, OH 45150

RTU-7 Sales Floor

DESIGN DATA

CAPACITY (TONS)	20
EXTERNAL SP	N/A
MODEL NO.	N/A
FAN HP	N/A
VOLTS/PHASE	NA
CFM PER TON	450

EQUIP. DATA

UNIT MFR.	Lennox
MODEL NO.	LGE240H4BH36
SERIAL NO.	5605K12194
CATALOG NO.	C6124
RATED TONS	20
FAN MOTOR	Emerson
HP	5
RPM	1745
VOLTS/PHASE	460/3
FLA	6.4
MOTOR SHEAVE	2VP60 x 1"
FAN SHEAVE	2BK120H x 1 7/16"
BELT(S)	BX68 (2)

TEST DATA

INITIAL RPM	785
FINAL RPM	785
INITIAL OPER. AMPS	4.2
FINAL OPER. AMPS	4.2
VOLTS	480
CFM PER TON	367
VFD OPER HZ (MAX)	N/A
IOP DAMPER (OA)%	N/A

STATIC PROFILE

RETURN SP	0.302"
FAN SUCTION SP	0.744"
FAN DISCHARGE SP	0.256"
FILTER/COIL SP	0.442"
ACT EXTERNAL SP	0.558"
TOTAL FAN SP	1.0"

NO.	AREA SERVED	TYPE	DESIGN			PRELIM.	FINAL
			9000	7338	7338		
7A	Sales Floor	42" x 42" 4-Way	9000	7338	7338		82%
R7A	Sales Floor	Return Grille	6000	7338	5139		86%

DESIGN PRELIM. FINAL

SUPPLY	9000	7338	7338	82%
RETURN	6000		5139	86%
OUTSIDE AIR	3000		2199	73%
%OUTSIDE AIR	33%		30%	



ROOFTOP UNITS (RTU) DATA

PROJECT: Melink Corporation 1234

DATE: 7/13/2011

LOCATION: 5140 River Valley Road, Milford, OH 45150

RTU-9 Sales Floor

DESIGN DATA

CAPACITY (TONS)	20
EXTERNAL SP	N/A
MODEL NO.	N/A
FAN HP	N/A
VOLTS/PHASE	NA
CFM PER TON	375

EQUIP. DATA

UNIT MFR.	Lennox
MODEL NO.	LGE240H4BS3G
SERIAL NO.	5605K12196
CATALOG NO.	C6125
RATED TONS	20
FAN MOTOR	Emerson
HP	5
RPM	1745
VOLTS/PHASE	460/3
FLA	6.4
MOTOR SHEAVE	2VP60 x 1"
FAN SHEAVE	2BK120H x 1 7/16"
BELT(S)	BX68 (2)

TEST DATA

INITIAL RPM	789
FINAL RPM	789
INITIAL OPER. AMPS	4.0
FINAL OPER. AMPS	4.0
VOLTS	478
CFM PER TON	351
VFD OPER HZ (MAX)	N/A
IOP DAMPER (OA)%	N/A

STATIC PROFILE

RETURN SP	0.31"
FAN SUCTION SP	0.752"
FAN DISCHARGE SP	0.196"
FILTER/COIL SP	0.442"
ACT EXTERNAL SP	0.506"
TOTAL FAN SP	0.948"

NO.	AREA SERVED	TYPE	DESIGN	PRELIM.	FINAL
9A	Sales Floor	Grille	N/A	882	882
9B	Sales Floor	Grille	N/A	879	879
9C	Sales Floor	Grille	N/A	871	871
9D	Sales Floor	Grille	N/A	874	874
9E	Vestibule	Grille	N/A	877	877
9F	Vestibule	Grille	N/A	891	891
9G	Vestibule	Grille	N/A	870	870
9H	Vestibule	Grille	N/A	869	869

R9A	Sales Floor	Return Grille	6750	7013	6325	94%

	DESIGN	PRELIM.	FINAL	
SUPPLY	7500	7013	7013	94%
RETURN	6750		6325	94%
OUTSIDE AIR	750		688	92%
%OUTSIDE AIR	10%		10%	

ROOFTOP UNITS (RTU) DATA

PROJECT: Melink Corporation 1234

DATE: 7/13/2011

LOCATION: 5140 River Valley Road, Milford, OH 45150

RTU-10 Money Center/Training

DESIGN DATA

CAPACITY (TONS)	10
EXTERNAL SP	N/A
MODEL NO.	N/A
FAN HP	N/A
VOLTS/PHASE	NA
CFM PER TON	400

EQUIP. DATA

UNIT MFR.	Lennox
MODEL NO.	LGE120H4BH3G
SERIAL NO.	5606A06815
CATALOG NO.	D2866
RATED TONS	10
FAN MOTOR	Emerson
HP	3
RPM	1725
VOLTS/PHASE	460/3
FLA	4.6
MOTOR SHEAVE	1VP60 x 7/8"
FAN SHEAVE	11.5" x 1"
BELT(S)	BX66

TEST DATA

INITIAL RPM	799
FINAL RPM	799
INITIAL OPER. AMPS	3.3
FINAL OPER. AMPS	3.3
VOLTS	478
CFM PER TON	392
VFD OPER HZ (MAX)	N/A
IOP DAMPER (OA)%	N/A

STATIC PROFILE

RETURN SP	0.28"
FAN SUCTION SP	0.821"
FAN DISCHARGE SP	0.329"
FILTER/COIL SP	0.541"
ACT EXTERNAL SP	0.609"
TOTAL FAN SP	1.15"

NO.	AREA SERVED	TYPE	DESIGN	PRELIM.	FINAL	
10A	Passage	4-Way	400	322	322	81%
10B	Money Center	4-Way	200	180	180	90%
10C	Money Center	4-Way	200	222	222	111%
10D	Money Center	4-Way	200	185	185	93%
10E	Money Center	4-Way	200	197	197	99%
10F	Training	4-Way	250	215	215	86%
10G	Training	4-Way	350	257	257	73%
10H	Training	4-Way	275	236	236	86%
10I	Training	4-Way	275	292	292	106%
10J	Personnel	4-Way	250	279	279	112%
10K	Hallway	Grille	350	317	317	91%
10L	Hallway	Grille	350	322	322	92%
10M	Hallway	Grille	350	343	343	98%
10N	Hallway	Grille	350	319	319	91%
10O	Training	4-Way	N/A	230	230	

R10A	Hallway	Return Grille	3200	3916	3194	100%

DESIGN PRELIM. FINAL

SUPPLY	4000	3916	3916	98%
RETURN	3200		3194	100%
OUTSIDE AIR	800		722	90%
%OUTSIDE AIR	20%		18%	

ROOFTOP UNITS (RTU) DATA

PROJECT: Melink Corporation 1234

DATE: 7/13/2011

LOCATION: 5140 River Valley Road, Milford, OH 45150

RTU-11 Sales Floor

DESIGN DATA

CAPACITY (TONS)	20
EXTERNAL SP	N/A
MODEL NO.	N/A
FAN HP	N/A
VOLTS/PHASE	NA
CFM PER TON	450

EQUIP. DATA

UNIT MFR.	Lennox
MODEL NO.	LGE240H4BH3G
SERIAL NO.	5605K12192
CATALOG NO.	C6124
RATED TONS	20
FAN MOTOR	Emerson
HP	3
RPM	1725
VOLTS/PHASE	460/3
FLA	4.6
MOTOR SHEAVE	2VP60 x 1 1/8"
FAN SHEAVE	2BK120H x 1 7/16"
BELT(S)	BX68 (2)

TEST DATA

INITIAL RPM	778
FINAL RPM	778
INITIAL OPER. AMPS	4.4
FINAL OPER. AMPS	4.4
VOLTS	481
CFM PER TON	368
VFD OPER HZ (MAX)	NA
IOP DAMPER (OA)%	NA

STATIC PROFILE

RETURN SP	0.344"
FAN SUCTION SP	0.638"
FAN DISCHARGE SP	0.325"
FILTER/COIL SP	0.294"
ACT EXTERNAL SP	0.669"
TOTAL FAN SP	0.963"

NO.	AREA SERVED	TYPE	DESIGN	PRELIM.	FINAL	
11A	Sales Floor	42" x 42" 4-Way	9000	7363	7363	82%
R11A	Sales Floor	Return Grille	6000	7363	5164	86%

	DESIGN	PRELIM.	FINAL	
SUPPLY	9000	7363	7363	82%
RETURN	6000		5164	86%
OUTSIDE AIR	3000		2199	73%
%OUTSIDE AIR	33%		30%	

ROOFTOP UNITS (RTU) DATA

PROJECT: Melink Corporation 1234

DATE: 7/13/2011

LOCATION: 5140 River Valley Road, Milford, OH 45150

RTU-12 Sales Floor

DESIGN DATA

CAPACITY (TONS)	20
EXTERNAL SP	N/A
MODEL NO.	N/A
FAN HP	N/A
VOLTS/PHASE	NA
CFM PER TON	450

EQUIP. DATA

UNIT MFR.	Lennox
MODEL NO.	LGE240H4BH36
SERIAL NO.	5605K12190
CATALOG NO.	C6124
RATED TONS	20
FAN MOTOR	Emerson
HP	5
RPM	1745
VOLTS/PHASE	460/3
FLA	6.4
MOTOR SHEAVE	2VP60 x 1 1/8"
FAN SHEAVE	2BK120H x 1 7/16"
BELT(S)	BX68 (2)

TEST DATA

INITIAL RPM	767
FINAL RPM	767
INITIAL OPER. AMPS	3.8
FINAL OPER. AMPS	3.8
VOLTS	480
CFM PER TON	375
VFD OPER HZ (MAX)	N/A
IOP DAMPER (OA)%	N/A

STATIC PROFILE

RETURN SP	0.279"
FAN SUCTION SP	0.558"
FAN DISCHARGE SP	0.277"
FILTER/COIL SP	0.279"
ACT EXTERNAL SP	0.556"
TOTAL FAN SP	0.835"

NO.	AREA SERVED	TYPE	DESIGN		PRELIM.	FINAL	
			9000	7491			
12A	Sales Floor	42" x 42" 4-Way	9000	7491	7491	83%	
R12A	Sales Floor	Return Grille	6000	7491	5183	86%	

	DESIGN	PRELIM.	FINAL	
SUPPLY	9000	7491	7491	83%
RETURN	6000		5183	86%
OUTSIDE AIR	3000		2308	77%
%OUTSIDE AIR	33%		31%	

ROOFTOP UNITS (RTU) DATA

PROJECT: Melink Corporation 1234

DATE: 7/13/2011

LOCATION: 5140 River Valley Road, Milford, OH 45150

RTU-15 Sales Floor

DESIGN DATA

CAPACITY (TONS)	20
EXTERNAL SP	N/A
MODEL NO.	N/A
FAN HP	N/A
VOLTS/PHASE	NA
CFM PER TON	450

EQUIP. DATA

UNIT MFR.	Lennox
MODEL NO.	LGE240H4BS3G
SERIAL NO.	5605K12197
CATALOG NO.	C6125
RATED TONS	20
FAN MOTOR	Emerson
HP	5
RPM	1745
VOLTS/PHASE	460/3
FLA	6.4
MOTOR SHEAVE	2VP60 x 1 1/8"
FAN SHEAVE	2BK120H x 1 7/16"
BELT(S)	BX68 (2)

TEST DATA

INITIAL RPM	795
FINAL RPM	795
INITIAL OPER. AMPS	4.2
FINAL OPER. AMPS	4.2
VOLTS	480
CFM PER TON	370
VFD OPER HZ (MAX)	N/A
IOP DAMPER (OA)%	N/A

STATIC PROFILE

RETURN SP	0.384"
FAN SUCTION SP	0.772"
FAN DISCHARGE SP	0.225"
FILTER/COIL SP	0.388"
ACT EXTERNAL SP	0.609"
TOTAL FAN SP	0.997"

NO.	AREA SERVED	TYPE	DESIGN		PRELIM.	FINAL	
15A	Sales Floor	42" x 42" 4-Way	9000	7399	7399		82%
R15A	Sales	Return Grille	6000	7399	5166		86%

	DESIGN		PRELIM.	FINAL	
SUPPLY	9000	7399	7399		82%
RETURN	6000		5166		86%
OUTSIDE AIR	3000		2233		74%
%OUTSIDE AIR	33%		30%		



ROOFTOP UNITS (RTU) DATA

PROJECT: Melink Corporation 1234

DATE: 7/13/2011

LOCATION: 5140 River Valley Road, Milford, OH 45150

RTU-16 Pharmacy

DESIGN DATA

CAPACITY (TONS)	3
EXTERNAL SP	0.5"
MODEL NO.	N/A
FAN HP	N/A
VOLTS/PHASE	NA
CFM PER TON	400

EQUIP. DATA

UNIT MFR.	Lennox
MODEL NO.	SGA036H4BT1G
SERIAL NO.	5610C09291
CATALOG NO.	F0998
RATED TONS	3
FAN MOTOR	Baldor
HP	1 1/2
RPM	1725
VOLTS/PHASE	460/3
FLA	2.4
MOTOR SHEAVE	3" x 7/8"
FAN SHEAVE	AK61 x 1"
BELT(S)	AX44

TEST DATA

INITIAL RPM	772
FINAL RPM	772
INITIAL OPER. AMPS	2.4
FINAL OPER. AMPS	2.4
VOLTS	477
CFM PER TON	417
VFD OPER HZ (MAX)	N/A
IOP DAMPER (OA)%	N/A

STATIC PROFILE

RETURN SP	0.1"
FAN SUCTION SP	0.249"
FAN DISCHARGE SP	0.214"
FILTER/COIL SP	0.149"
ACT EXTERNAL SP	0.314"
TOTAL FAN SP	0.463"

NO.	AREA SERVED	TYPE	DESIGN	PRELIM.	FINAL	
16A	Pharmacy Restroom	4-Way	100	27	90	90%
16B	Pharmacy	4-Way	275	37	301	109%
16C	Pharmacy	4-Way	275	420	297	108%
16D	Pharmacy	4-Way	275	374	278	101%
16E	Pharmacy	4-Way	275	420	284	103%
R16A	Pharmacy	Return Grille	1000	1278	1069	107%

	DESIGN	PRELIM.	FINAL	
SUPPLY	1200	1278	1250	104%
RETURN	1000		1069	107%
OUTSIDE AIR	200		181	91%
%OUTSIDE AIR	17%		14%	

ROOFTOP UNITS (RTU) DATA

PROJECT: Melink Corporation 1234

DATE: 7/13/2011

LOCATION: 5140 River Valley Road, Milford, OH 45150

RTU-18 Sales Floor

DESIGN DATA

CAPACITY (TONS)	20
EXTERNAL SP	N/A
MODEL NO.	N/A
FAN HP	N/A
VOLTS/PHASE	NA
CFM PER TON	450

EQUIP. DATA

UNIT MFR.	Lennox
MODEL NO.	LGE240H4BH3G
SERIAL NO.	5605K12191
CATALOG NO.	C6124
RATED TONS	20
FAN MOTOR	Emerson
HP	5
RPM	1745
VOLTS/PHASE	460/3
FLA	6.4
MOTOR SHEAVE	2VP60 x 1 1/8"
FAN SHEAVE	2BK120H x 1 7/16"
BELT(S)	BX68 (2)

TEST DATA

INITIAL RPM	793
FINAL RPM	793
INITIAL OPER. AMPS	4.4
FINAL OPER. AMPS	4.4
VOLTS	478
CFM PER TON	372
VFD OPER HZ (MAX)	N/A
IOP DAMPER (OA)%	N/A

STATIC PROFILE

RETURN SP	0.307"
FAN SUCTION SP	0.662"
FAN DISCHARGE SP	0.405"
FILTER/COIL SP	0.355"
ACT EXTERNAL SP	0.712"
TOTAL FAN SP	1.067"

NO.	AREA SERVED	TYPE	DESIGN			
			PRELIM.	FINAL		
18A	Sales Floor	42" x 42" 4-Way	9000	7433	7433	83%
R18A	Sales	Return Grille	6000	7433	5050	84%

	DESIGN	PRELIM.	FINAL	
SUPPLY	9000	7433	7433	83%
RETURN	6000		5050	84%
OUTSIDE AIR	3000		2383	79%
%OUTSIDE AIR	33%		32%	



ROOFTOP UNITS (RTU) DATA

PROJECT: Melink Corporation 1234

DATE: 7/13/2011

LOCATION: 5140 River Valley Road, Milford, OH 45150

RTU-19 Sales Floor

DESIGN DATA

CAPACITY (TONS)	20
EXTERNAL SP	N/A
MODEL NO.	N/A
FAN HP	N/A
VOLTS/PHASE	NA
CFM PER TON	450

EQUIP. DATA

UNIT MFR.	Lennox
MODEL NO.	LGE240H4BH3G
SERIAL NO.	5605K12193
CATALOG NO.	C6124
RATED TONS	20
FAN MOTOR	Emerson
HP	5
RPM	1745
VOLTS/PHASE	460/3
FLA	6.4
MOTOR SHEAVE	2VP60 x 1 1/8"
FAN SHEAVE	2BK120H x 1 7/16"
BELT(S)	BX68 (2)

TEST DATA

INITIAL RPM	778
FINAL RPM	778
INITIAL OPER. AMPS	4.0
FINAL OPER. AMPS	4.0
VOLTS	479
CFM PER TON	365
VFD OPER HZ (MAX)	N/A
IOP DAMPER (OA)%	N/A

STATIC PROFILE

RETURN SP	0.26"
FAN SUCTION SP	0.587"
FAN DISCHARGE SP	0.362"
FILTER/COIL SP	0.327"
ACT EXTERNAL SP	0.622"
TOTAL FAN SP	0.949"

NO.	AREA SERVED	TYPE	DESIGN			
			PRELIM.	FINAL		
19A	Sales Floor	42" x 42" 4-Way	9000	7299	7299	81%
R19A	Sales Floor	Return Grille	6000	7299	5088	85%

	DESIGN	PRELIM.	FINAL	
SUPPLY	9000	7299	7299	81%
RETURN	6000		5088	85%
OUTSIDE AIR	3000		2211	74%
%OUTSIDE AIR	33%		30%	



ROOFTOP UNITS (RTU) DATA

PROJECT: Melink Corporation 1234

DATE: 7/13/2011

LOCATION: 5140 River Valley Road, Milford, OH 45150

RTU-24 Stockroom

DESIGN DATA

CAPACITY (TONS)	NA
EXTERNAL SP	N/A
MODEL NO.	N/A
FAN HP	N/A
VOLTS/PHASE	NA
CFM PER TON	NA

EQUIP. DATA

UNIT MFR.	Lennox
MODEL NO.	LGE060H4BH2G
SERIAL NO.	5605M10304
CATALOG NO.	A6303
RATED TONS	5
FAN MOTOR	Emerson
HP	1 1/2
RPM	1725
VOLTS/PHASE	460/3
FLA	2.5
MOTOR SHEAVE	4" x 7/8"
FAN SHEAVE	AK64 x 1"
BELT(S)	AX46

TEST DATA

INITIAL RPM	1021
FINAL RPM	1021
INITIAL OPER. AMPS	1.6
FINAL OPER. AMPS	1.6
VOLTS	478
CFM PER TON	360
VFD OPER HZ (MAX)	N/A
IOP DAMPER (OA)%	N/A

STATIC PROFILE

RETURN SP	0.207"
FAN SUCTION SP	0.513"
FAN DISCHARGE SP	0.684"
FILTER/COIL SP	0.306"
ACT EXTERNAL SP	0.891"
TOTAL FAN SP	1.197"

NO.	AREA SERVED	TYPE	DESIGN PRELIM. FINAL		
24A	Stockroom	42" x 42" 4-Way	N/A	1799	1799

R24A	Stockroom	Return Grille	N/A	1799	1799

DESIGN PRELIM. FINAL

SUPPLY	N/A	1799	1799
RETURN	N/A		1799
OUTSIDE AIR	N/A		0
%OUTSIDE AIR	N/A		0%



ROOFTOP UNITS (RTU) DATA

PROJECT: Melink Corporation 1234

DATE: 7/13/2011

LOCATION: 5140 River Valley Road, Milford, OH 45150

RTU-25 2nd Floor Stockroom

DESIGN DATA

CAPACITY (TONS)	NA
EXTERNAL SP	N/A
MODEL NO.	N/A
FAN HP	N/A
VOLTS/PHASE	NA
CFM PER TON	N/A

EQUIP. DATA

UNIT MFR.	Lennox
MODEL NO.	LGE060H4BH2G
SERIAL NO.	5605M03783
CATALOG NO.	A6303
RATED TONS	5
FAN MOTOR	Emerson
HP	1 1/2
RPM	1725
VOLTS/PHASE	460/3
FLA	2.5
MOTOR SHEAVE	3" x 7/8"
FAN SHEAVE	AK64 x 1"
BELT(S)	AX46

TEST DATA

INITIAL RPM	981
FINAL RPM	981
INITIAL OPER. AMPS	1.6
FINAL OPER. AMPS	1.6
VOLTS	483
CFM PER TON	378
VFD OPER HZ (MAX)	N/A
IOP DAMPER (OA)%	N/A

STATIC PROFILE

RETURN SP	0.043"
FAN SUCTION SP	0.385"
FAN DISCHARGE SP	0.404"
FILTER/COIL SP	0.343"
ACT EXTERNAL SP	0.447"
TOTAL FAN SP	0.789"

NO.	AREA SERVED	TYPE	DESIGN	PRELIM.	FINAL	
25A	Stockroom	42" x 42" 4-Way	2000	1888	1888	94%
R25A	Breakroom	Return Grille	1630	1888	1527	94%

DESIGN PRELIM. FINAL

SUPPLY	2000	1888	1888	94%
RETURN	1630		1527	94%
OUTSIDE AIR	370		361	98%
%OUTSIDE AIR	19%		19%	

ROOFTOP UNITS (RTU) DATA

PROJECT: Melink Corporation 1234

DATE: 7/13/2011

LOCATION: 5140 River Valley Road, Milford, OH 45150

RTU-26 AD Office/MGMT/Invoicing

DESIGN DATA

CAPACITY (TONS)	3
EXTERNAL SP	N/A
MODEL NO.	N/A
FAN HP	N/A
VOLTS/PHASE	NA
CFM PER TON	400

EQUIP. DATA

UNIT MFR.	Lennox
MODEL NO.	SGA036H4BT1G
SERIAL NO.	5610B00160
CATALOG NO.	50998
RATED TONS	3
FAN MOTOR	Baldor
HP	1 1/2
RPM	1725
VOLTS/PHASE	460/3
FLA	2.4
MOTOR SHEAVE	3" x 7/8"
FAN SHEAVE	AK61 x 1"
BELT(S)	AX44

TEST DATA

INITIAL RPM	770
FINAL RPM	770
INITIAL OPER. AMPS	2.2
FINAL OPER. AMPS	2.2
VOLTS	480
CFM PER TON	362
VFD OPER HZ (MAX)	N/A
IOP DAMPER (OA)%	N/A

STATIC PROFILE

RETURN SP	0.177"
FAN SUCTION SP	0.256"
FAN DISCHARGE SP	0.345"
FILTER/COIL SP	0.079"
ACT EXTERNAL SP	0.522"
TOTAL FAN SP	0.601"

NO.	AREA SERVED	TYPE	DESIGN	PRELIM.	FINAL	
26A	Managers Office	4-Way	200	231	183	92%
26B	AD Office	4-Way	200	82	181	91%
26C	Above Ceiling	Grille	500	741	451	90%
26D	Invoicing	4-Way	300	38	271	90%

R26A	Stock Room	Grille	1080	1092	967	90%

		DESIGN	PRELIM.	FINAL	
SUPPLY		1200	1092	1086	91%
RETURN		1080		967	90%
OUTSIDE AIR		120		119	99%
%OUTSIDE AIR		10%		11%	



ROOFTOP UNITS (RTU) DATA

PROJECT: Melink Corporation 1234

DATE: 7/13/2011

LOCATION: 5140 River Valley Road, Milford, OH 45150

RTU-27 UPC/UPS

DESIGN DATA

CAPACITY (TONS)	5
EXTERNAL SP	N/A
MODEL NO.	N/A
FAN HP	N/A
VOLTS/PHASE	NA
CFM PER TON	330

EQUIP. DATA

UNIT MFR.	Lennox
MODEL NO.	SGA060H4BH1G
SERIAL NO.	5610A08837
CATALOG NO.	F0550
RATED TONS	5
FAN MOTOR	Baldor
HP	1 1/2
RPM	1725
VOLTS/PHASE	460/3
FLA	2.4
MOTOR SHEAVE	3" x 7/8"
FAN SHEAVE	AK61 x 1"
BELT(S)	AX44

TEST DATA

INITIAL RPM	928
FINAL RPM	928
INITIAL OPER. AMPS	2.2
FINAL OPER. AMPS	2.2
VOLTS	483
CFM PER TON	307
VFD OPER HZ (MAX)	N/A
IOP DAMPER (OA)%	N/A

STATIC PROFILE

RETURN SP	0.131"
FAN SUCTION SP	0.346"
FAN DISCHARGE SP	0.114"
FILTER/COIL SP	0.215"
ACT EXTERNAL SP	0.245"
TOTAL FAN SP	0.46"

NO.	AREA SERVED	TYPE	DESIGN		PRELIM.	FINAL
27A	UPC/UPS	4-Way	1650	1533	1533	93%
R27A	UPC/UPS	Return Grille	1485	1533	1370	92%

	DESIGN	PRELIM.	FINAL
SUPPLY	1650	1533	1533
RETURN	1485		1370
OUTSIDE AIR	165		163
%OUTSIDE AIR	10%		11%

ROOFTOP UNITS (RTU) DATA

PROJECT: Melink Corporation 1234 **DATE:** 7/13/2011

LOCATION: 5140 River Valley Road, Milford, OH 45150

RTU-28 2nd Floor Stockroom

DESIGN DATA

CAPACITY (TONS)	NA
EXTERNAL SP	N/A
MODEL NO.	N/A
FAN HP	N/A
VOLTS/PHASE	NA
CFM PER TON	N/A

EQUIP. DATA

UNIT MFR.	Lennox
MODEL NO.	LGE060H4BH2G
SERIAL NO.	5605M10308
CATALOG NO.	A6303
RATED TONS	5
FAN MOTOR	Emerson
HP	1 1/2
RPM	1725
VOLTS/PHASE	460/3
FLA	2.5
MOTOR SHEAVE	1VP44 x 7/8"
FAN SHEAVE	AK64 x 1"
BELT(S)	AX46

TEST DATA

INITIAL RPM	1057
FINAL RPM	1057
INITIAL OPER. AMPS	1.5
FINAL OPER. AMPS	1.5
VOLTS	482
CFM PER TON	381
VFD OPER HZ (MAX)	N/A
IOP DAMPER (OA)%	N/A

STATIC PROFILE

RETURN SP	0.057"
FAN SUCTION SP	0.422"
FAN DISCHARGE SP	0.318"
FILTER/COIL SP	0.365"
ACT EXTERNAL SP	0.375"
TOTAL FAN SP	0.74"

NO.	AREA SERVED	TYPE	DESIGN PRELIM.		FINAL	95%
			2000	1903	1903	
28A	Stockroom	42" x 42" 4-Way	2000	1903	1903	95%

R28A	Stockroom	Ceiling Grille	2000	1903	1903	95%

	DESIGN PRELIM.		FINAL	95%
	2000	1903	1903	
SUPPLY	2000	1903	1903	95%
RETURN	2000		1903	95%
OUTSIDE AIR	0		0	
%OUTSIDE AIR	0%		0%	

ROOFTOP UNITS (RTU) DATA

PROJECT: Melink Corporation 1234

DATE: 7/13/2011

LOCATION: 5140 River Valley Road, Milford, OH 45150

RTU-29 Stock Room

DESIGN DATA

CAPACITY (TONS)	5
EXTERNAL SP	N/A
MODEL NO.	N/A
FAN HP	N/A
VOLTS/PHASE	NA
CFM PER TON	400

EQUIP. DATA

UNIT MFR.	Lennox
MODEL NO.	LGE060H4BH2G
SERIAL NO.	5605M10305
CATALOG NO.	A6303
RATED TONS	5
FAN MOTOR	Emerson
HP	1 1/2
RPM	1725
VOLTS/PHASE	460/3
FLA	2.5
MOTOR SHEAVE	4" x 7/8"
FAN SHEAVE	AK64 x 1"
BELT(S)	AX46

TEST DATA

INITIAL RPM	999
FINAL RPM	999
INITIAL OPER. AMPS	1.4
FINAL OPER. AMPS	1.4
VOLTS	482
CFM PER TON	404
VFD OPER HZ (MAX)	N/A
IOP DAMPER (OA)%	N/A

STATIC PROFILE

RETURN SP	0.103"
FAN SUCTION SP	0.434"
FAN DISCHARGE SP	0.418"
FILTER/COIL SP	0.331"
ACT EXTERNAL SP	0.521"
TOTAL FAN SP	0.852"

NO.	AREA SERVED	TYPE	DESIGN		PRELIM.	FINAL	
29A	Stockroom	Grille	1000	921	921		92%
29B	Stockroom	Grille	1000	917	917		92%
29C	Machine Room #3	Grille	N/A	181	181		
R29A	Stockroom	Ceiling Grille	1800	1838	1657		92%

	DESIGN	PRELIM.	FINAL	
SUPPLY	2000	2019	2019	101%
RETURN	1800		1657	92%
OUTSIDE AIR	200		181	91%
%OUTSIDE AIR	10%		9%	

ROOFTOP UNITS (RTU) DATA

PROJECT: Melink Corporation 1234

DATE: 7/13/2011

LOCATION: 5140 River Valley Road, Milford, OH 45150

RTU-30 Stock Room

DESIGN DATA

CAPACITY (TONS)	5
EXTERNAL SP	N/A
MODEL NO.	N/A
FAN HP	N/A
VOLTS/PHASE	NA
CFM PER TON	400

EQUIP. DATA

UNIT MFR.	Lennox
MODEL NO.	LGE060H4BH2G
SERIAL NO.	5605M03786
CATALOG NO.	A6303
RATED TONS	5
FAN MOTOR	Emerson
HP	1 1/2
RPM	1725
VOLTS/PHASE	460/3
FLA	2.5
MOTOR SHEAVE	4" x 7/8"
FAN SHEAVE	AK64 x 1"
BELT(S)	AX46

TEST DATA

INITIAL RPM	944
FINAL RPM	944
INITIAL OPER. AMPS	1.6
FINAL OPER. AMPS	1.6
VOLTS	481
CFM PER TON	94
VFD OPER HZ (MAX)	N/A
IOP DAMPER (OA)%	N/A

STATIC PROFILE

RETURN SP	0.016"
FAN SUCTION SP	0.766"
FAN DISCHARGE SP	0.08"
FILTER/COIL SP	0.75"
ACT EXTERNAL SP	0.096"
TOTAL FAN SP	0.846"

NO.	AREA SERVED	TYPE	DESIGN	PRELIM.	FINAL	
30A	Stockroom	Grille	250	51	51	20%
30B	Stockroom	Grille	250	52	52	21%
30C	Meat Prep	4-Way	300	49	49	16%
30D	Stockroom	Grille	250	47	47	19%
30E	Stockroom	Grille	250	59	59	24%
30F	Stockroom	Grille	200	55	55	28%
30G	Stockroom	Grille	300	51	51	17%
30H	Stockroom	Grille	200	46	46	23%
30I	Machine Room #2	Grille	N/A	23	23	
30J	Machine Room #1	Grille	N/A	36	36	

R30A	Stockroom	Ceiling Grille	1760	410	410	23%

	DESIGN	PRELIM.	FINAL	
SUPPLY	2000	469	469	23%
RETURN	1760		410	23%
OUTSIDE AIR	240		0	0%
%OUTSIDE AIR	12%		0%	

DEHUMIDIFICATION UNIT (DHU)

PROJECT: Melink Corporation 1234

DATE: 7/13/2011

LOCATION: 5140 River Valley Road, Milford, OH 45150

AHU-1 Sales

DESIGN DATA

CAPACITY (TONS)	30
EXTERNAL SP	NA
MODEL NO.	NA
FAN HP	NA
VOLTS/PHASE	NA
CFM PER TON	NA

EQUIP. DATA

UNIT MFR.	Munters
MODEL NO.	HCUw6034-SXBN
SERIAL NO.	908013-0001
CATALOG NO.	NA
RATED TONS	NA
FAN MOTOR	Munters
HP	5
RPM	1745
VOLTS/PHASE	460/3
FLA	6.5
MOTOR SHEAVE	5" x 1 1/8"
FAN SHEAVE	10.5" (H) x 1 7/16"
BELT(S)	B67

TEST DATA

VFD FREQ (DH)	NA
VFD FREQ (DX)	NA
VOLTS	NA
INITIAL OPER. AMPS	NA
FINAL OPER. AMPS	NA
DX COIL SP DH*	NA
DX COIL SP DX	NA
PROCESS SP*	NA
REACT SP*	NA
REACT COIL SP*	NA
CFM PER TON	N/A

*SP readings in DH mode

NO.	AREA SERVED	TYPE	DESIGN		
			PRELIM.	FINAL	FINAL
1A	Sales Floor	42" x 42" 4-Way	10000	NA	NA
R1A	Sales	Return Grille	5000	NA	NA

	DESIGN	PRELIM.	FINAL
SUPPLY	10000	NA	NA
RETURN	5000		NA
OUTSIDE AIR	5000		NA
%OUTSIDE AIR	50%		NA

DEHUMIDIFICATION UNIT (DHU)

PROJECT: Melink Corporation 1234

DATE: 7/13/2011

LOCATION: 5140 River Valley Road, Milford, OH 45150

AHU-2 Sales

DESIGN DATA

CAPACITY (TONS)	30
EXTERNAL SP	NA
MODEL NO.	NA
FAN HP	NA
VOLTS/PHASE	NA
CFM PER TON	NA

EQUIP. DATA

UNIT MFR.	Munters
MODEL NO.	HCUw6034-SXBN
SERIAL NO.	908014-0001
CATALOG NO.	NA
RATED TONS	NA
FAN MOTOR	Munters
HP	5
RPM	1745
VOLTS/PHASE	460/3
FLA	6.5
MOTOR SHEAVE	5" x 1 1/8"
FAN SHEAVE	10.5" (H) x 1 7/16"
BELT(S)	B67

TEST DATA

VFD FREQ (DH)	NA
VFD FREQ (DX)	NA
VOLTS	NA
INITIAL OPER. AMPS	NA
FINAL OPER. AMPS	NA
DX COIL SP DH*	NA
DX COIL SP DX	NA
PROCESS SP*	NA
REACT SP*	NA
REACT COIL SP*	NA
CFM PER TON	NA

*SP readings in DH mode

NO.	AREA SERVED	TYPE	DESIGN	PRELIM.	FINAL
2A	Sales	42" x 42" 4-Way	10000	NA	NA

R1n	Sales	Return Grille	5000	NA	NA

	DESIGN	PRELIM.	FINAL
SUPPLY	10000	NA	NA
RETURN	5000		NA
OUTSIDE AIR	5000		NA
%OUTSIDE AIR	50%		NA

EXHAUST FAN (EF) DATA

PROJECT: Melink Corporation 1234

DATE: 7/13/2011

LOCATION: 5140 River Valley Road, Milford, OH 45150

EF-1 Restrooms

DESIGN DATA

EXTERNAL S.P.	N/A
FAN HP	NA
VOLTS/PHASE	NA

EQUIP. DATA

UNIT MFR.	Penn & Barry
• MODEL NO.	DX16R
• SERIAL NO.	F10CZ17316
FAN MOTOR	Fasco
• HP	1/3
• RPM	1550
• VOLTS/PHASE	115/1
• FLA	4
• O.L. PROTECT.	Thermal
MOTOR SHEAVE	N/A
FAN SHEAVE	N/A
BELT(S)	N/A

TEST DATA

INITIAL RPM	VSC
FINAL RPM	VSC
EXTERNAL S.P.	N/A
MOTOR HZ	N/A
ACTUAL VOLTS	N/A
INITIAL AMPS	N/A
FINAL AMPS	N/A

NO.	AREA SERVED	TYPE	DESIGN	PRELIM.	FINAL
1A	Mens RR	Ceiling Grille	775	NA	NA
1B	Womens RR	Ceiling Grille	630	NA	NA

EXHAUST DATA	GRILLE	1405	NA	NA
--------------	--------	------	----	----

EXHAUST FAN (EF) DATA

PROJECT: Melink Corporation 1234

DATE: 7/13/2011

LOCATION: 5140 River Valley Road, Milford, OH 45150

EF-2 Optical Lab

DESIGN DATA

EXTERNAL S.P.	N/A
FAN HP	N/A
VOLTS/PHASE	N/A

EQUIP. DATA

UNIT MFR.	Penn & Barry
• MODEL NO.	DX10R
• SERIAL NO.	F10CZ21436
FAN MOTOR	Fasco
• HP	1/6
• RPM	1550
• VOLTS/PHASE	115/1
• FLA	1.8
• O.L. PROTECT.	Thermal
MOTOR SHEAVE	N/A
FAN SHEAVE	N/A
BELT(S)	N/A

TEST DATA

INITIAL RPM	VSC
FINAL RPM	VSC
EXTERNAL S.P.	N/A
MOTOR HZ	N/A
ACTUAL VOLTS	118
INITIAL AMPS	1.4
FINAL AMPS	1.4

NO.	AREA SERVED	TYPE	DESIGN	PRELIM.	FINAL
2A	Adjust	Ceiling Grille	200	283	254

127%

EXHAUST DATA	GRILLE	200	283	254
--------------	--------	-----	-----	-----

127%

EXHAUST FAN (EF) DATA

PROJECT: Melink Corporation 1234

DATE: 7/13/2011

LOCATION: 5140 River Valley Road, Milford, OH 45150

EF-3 Restrooms

DESIGN DATA

EXTERNAL S.P.	N/A
FAN HP	N/A
VOLTS/PHASE	N/A

EQUIP. DATA

UNIT MFR.	N/A
• MODEL NO.	N/A
• SERIAL NO.	N/A
FAN MOTOR	N/A
• HP	N/A
• RPM	N/A
• VOLTS/PHASE	N/A
• FLA	N/A
• O.L. PROTECT.	N/A
MOTOR SHEAVE	N/A
FAN SHEAVE	N/A
BELT(S)	N/A

TEST DATA

INITIAL RPM	VSC
FINAL RPM	VSC
EXTERNAL S.P.	N/A
MOTOR HZ	N/A
ACTUAL VOLTS	118
INITIAL AMPS	3.6
FINAL AMPS	3.6

NO.	AREA SERVED	TYPE	DESIGN PRELIM. FINAL			
3A	Mens RR	Ceiling Grille	950	605	605	64%
3B	Womens RR	Ceiling Grille	975	479	603	62%
3C	Family Toilet	Ceiling Grille	100	187	66	66%

EXHAUST DATA	GRILLE	2025	1271	1274	63%
--------------	--------	------	------	------	-----

EXHAUST FAN (EF) DATA

PROJECT: Melink Corporation 1234

DATE: 7/13/2011

LOCATION: 5140 River Valley Road, Milford, OH 45150

EF-4
Pharmacy Restroom

DESIGN DATA

EXTERNAL S.P.	N/A
FAN HP	N/A
VOLTS/PHASE	N/A

EQUIP. DATA

UNIT MFR.	Penn & Barry
• MODEL NO.	DX08R
• SERIAL NO.	FC10AS37547
FAN MOTOR	A.O. Smith
• HP	1/30
• RPM	1550
• VOLTS/PHASE	115/1
• FLA	0.8
• O.L. PROTECT.	Thermal
MOTOR SHEAVE	N/A
FAN SHEAVE	N/A
BELT(S)	N/A

TEST DATA

INITIAL RPM	VSC
FINAL RPM	VSC
EXTERNAL S.P.	N/A
MOTOR HZ	N/A
ACTUAL VOLTS	118
INITIAL AMPS	0.8
FINAL AMPS	0.8

NO.	AREA SERVED	TYPE	DESIGN	PRELIM.	FINAL	
4A	Pharmacy Restroom	Ceiling Grille	125	90	90	72%

EXHAUST DATA	GRILLE	125	90	90	72%
--------------	--------	-----	----	----	-----

EXHAUST FAN (EF) DATA

PROJECT: Melink Corporation 1234

DATE: 7/13/2011

LOCATION: 5140 River Valley Road, Milford, OH 45150

EF-5 *Rear Restroom*

DESIGN DATA

EXTERNAL S.P.	0.375"
FAN HP	1/8
VOLTS/PHASE	120/1

EQUIP. DATA

UNIT MFR.	Penn & Barry
• MODEL NO.	DX10R
• SERIAL NO.	F10CZ21474
FAN MOTOR	Fasco
• HP	1/6
• RPM	1550
• VOLTS/PHASE	115/1
• FLA	1.8
• O.L. PROTECT.	Thermal
MOTOR SHEAVE	N/A
FAN SHEAVE	N/A
BELT(S)	N/A

TEST DATA

INITIAL RPM	VSC
FINAL RPM	VSC
EXTERNAL S.P.	N/A
MOTOR HZ	N/A
ACTUAL VOLTS	118
INITIAL AMPS	1.3
FINAL AMPS	1.3

NO.	AREA SERVED	TYPE	DESIGN			PRELIM.	FINAL
			125	263	173		
5A	Rear Restrooms	Ceiling Grille	125	263	173		138%
5B	Rear Restrooms	Ceiling Grille	125	213	137		110%
EXHAUST DATA			GRILLE	250	476	310	124%

EXHAUST FAN (EF) DATA

PROJECT: Melink Corporation 1234

DATE: 7/13/2011

LOCATION: 5140 River Valley Road, Milford, OH 45150

EF-6 *Bakery Oven*

DESIGN DATA

EXTERNAL S.P.	0.5"
FAN HP	1/4
VOLTS/PHASE	120/1

EQUIP. DATA

UNIT MFR.	Penn & Barry
• MODEL NO.	FX10BFT
• SERIAL NO.	F10CZ18885
FAN MOTOR	WEG
• HP	1/3
• RPM	1735
• VOLTS/PHASE	115/1
• FLA	6.2
• O.L. PROTECT.	Thermal
MOTOR SHEAVE	N/A
FAN SHEAVE	N/A
BELT(S)	N/A

TEST DATA

INITIAL RPM	1218
FINAL RPM	1218
EXTERNAL S.P.	N/A
MOTOR HZ	N/A
ACTUAL VOLTS	118
INITIAL AMPS	5.6
FINAL AMPS	5.6

NO.	AREA SERVED	TYPE	DESIGN	PRELIM.	FINAL
6A	Bakery Oven	Ceiling Grille	900	1217	1217

135%

EXHAUST DATA	GRILLE	900	1217	1217
--------------	--------	-----	------	------

135%

EXHAUST FAN (EF) DATA

PROJECT: Melink Corporation 1234

DATE: 7/13/2011

LOCATION: 5140 River Valley Road, Milford, OH 45150

EF-7 Machine Room #1 (Emergency)

DESIGN DATA

EXTERNAL S.P.	0.5"
FAN HP	1/2
VOLTS/PHASE	120/1

EQUIP. DATA

UNIT MFR.	Penn & Barry
• MODEL NO.	DX16Q1
• SERIAL NO.	F10CZ21475
FAN MOTOR	Fasco
• HP	1/2
• RPM	1650
• VOLTS/PHASE	120/1
• FLA	5
• O.L. PROTECT.	Thermal
MOTOR SHEAVE	N/A
FAN SHEAVE	N/A
BELT(S)	N/A

TEST DATA

INITIAL RPM	VSC
FINAL RPM	VSC
EXTERNAL S.P.	N/A
MOTOR HZ	N/A
ACTUAL VOLTS	118
INITIAL AMPS	4
FINAL AMPS	5

NO.	AREA SERVED	TYPE	DESIGN	PRELIM.	FINAL	110%
7A	Emergency	Ceiling Grille	1800	900	1971	110%

EXHAUST DATA	GRILLE	1800	900	1971	110%
--------------	--------	------	-----	------	------

EXHAUST FAN (EF) DATA

PROJECT: Melink Corporation 1234

DATE: 7/13/2011

LOCATION: 5140 River Valley Road, Milford, OH 45150

EF-8 *Machine Room #1 (Heat Removal)*

DESIGN DATA

EXTERNAL S.P.	0.75"
FAN HP	2
VOLTS/PHASE	208/3

EQUIP. DATA

UNIT MFR.	Penn & Barry
• MODEL NO.	DX16Q
• SERIAL NO.	F10CZ17316
FAN MOTOR	Fasco
• HP	1/2
• RPM	1650
• VOLTS/PHASE	120/1
• FLA	5
• O.L. PROTECT.	Thermal
MOTOR SHEAVE	N/A
FAN SHEAVE	N/A
BELT(S)	N/A

TEST DATA

INITIAL RPM	VSC
FINAL RPM	VSC
EXTERNAL S.P.	N/A
MOTOR HZ	N/A
ACTUAL VOLTS	118
INITIAL AMPS	4
FINAL AMPS	5

NO.	AREA SERVED	TYPE	DESIGN	PRELIM.	FINAL	
8A	Heat Removal	Ceiling Grille	1975	1326	1937	98%

EXHAUST DATA	GRILLE	1975	1326	1937	98%
--------------	--------	------	------	------	-----



EXHAUST FAN (EF) DATA

PROJECT: Melink Corporation 1234 **DATE:** 7/13/2011

LOCATION: 5140 River Valley Road, Milford, OH 45150

EF-9 Machine Room #2 (Emergency)

DESIGN DATA

EXTERNAL S.P.	NA
FAN HP	NA
VOLTS/PHASE	NA

EQUIP. DATA

UNIT MFR.	Penn & Barry
• MODEL NO.	DX16Q
• SERIAL NO.	F10CZ21476
FAN MOTOR	Fasco
• HP	1/2
• RPM	1650
• VOLTS/PHASE	120/1
• FLA	5
• O.L. PROTECT.	Thermal
MOTOR SHEAVE	N/A
FAN SHEAVE	N/A
BELT(S)	N/A

TEST DATA

INITIAL RPM	VSC
FINAL RPM	VSC
EXTERNAL S.P.	N/A
MOTOR HZ	N/A
ACTUAL VOLTS	N/A
INITIAL AMPS	N/A
FINAL AMPS	N/A

NO.	AREA SERVED	TYPE	DESIGN	PRELIM.	FINAL
9A	Emergency	Ceiling Grille	1800	NA	NA

EXHAUST DATA	GRILLE	1800	NA	NA
--------------	--------	------	----	----

EXHAUST FAN (EF) DATA

PROJECT: Melink Corporation 1234

DATE: 7/13/2011

LOCATION: 5140 River Valley Road, Milford, OH 45150

EF-10 Machine Room #2 (Heat Removal)

DESIGN DATA

EXTERNAL S.P.	NA
FAN HP	NA
VOLTS/PHASE	NA

EQUIP. DATA

UNIT MFR.	Penn & Barry
• MODEL NO.	DX16S
• SERIAL NO.	F10CZ17318
FAN MOTOR	Fasco
• HP	1/3
• RPM	1550
• VOLTS/PHASE	115/1
• FLA	4
• O.L. PROTECT.	Thermal
MOTOR SHEAVE	N/A
FAN SHEAVE	N/A
BELT(S)	N/A

TEST DATA

INITIAL RPM	VSC
FINAL RPM	VSC
EXTERNAL S.P.	N/A
MOTOR HZ	N/A
ACTUAL VOLTS	N/A
INITIAL AMPS	N/A
FINAL AMPS	N/A

NO.	AREA SERVED	TYPE	DESIGN	PRELIM.	FINAL
10A	Heat Removal	Ceiling Grille	675	NA	NA

EXHAUST DATA	GRILLE	675	NA	NA
--------------	--------	-----	----	----

EXHAUST FAN (EF) DATA

PROJECT: Melink Corporation 1234

DATE: 7/13/2011

LOCATION: 5140 River Valley Road, Milford, OH 45150

EF-11 Machine Room #3 (Emergency)

DESIGN DATA

EXTERNAL S.P.	N/A
FAN HP	N/A
VOLTS/PHASE	N/A

EQUIP. DATA

UNIT MFR.	Penn & Barry
• MODEL NO.	DX16Q1
• SERIAL NO.	F10CZ21477
FAN MOTOR	Fasco
• HP	1/2
• RPM	1650
• VOLTS/PHASE	115/1
• FLA	5
• O.L. PROTECT.	Thermal
MOTOR SHEAVE	N/A
FAN SHEAVE	N/A
BELT(S)	N/A

TEST DATA

INITIAL RPM	VSC
FINAL RPM	VSC
EXTERNAL S.P.	N/A
MOTOR HZ	N/A
ACTUAL VOLTS	118
INITIAL AMPS	3.9
FINAL AMPS	3.9

NO.	AREA SERVED	TYPE	DESIGN	PRELIM.	FINAL	
11A	Emergency	Ceiling Grille	1800	825	1636	91%

EXHAUST DATA	GRILLE	1800	825	1636	91%
--------------	--------	------	-----	------	-----

EXHAUST FAN (EF) DATA

PROJECT: Melink Corporation 1234

DATE: 7/13/2011

LOCATION: 5140 River Valley Road, Milford, OH 45150

EF-12 *Machine Room #3 (Heat Removal)*

DESIGN DATA

EXTERNAL S.P.	N/A
FAN HP	N/A
VOLTS/PHASE	N/A

EQUIP. DATA

UNIT MFR.	Penn & Barry
• MODEL NO.	DX11Q
• SERIAL NO.	F10CZ17319
FAN MOTOR	Fasco
• HP	1/5
• RPM	1725
• VOLTS/PHASE	115/1
• FLA	3
• O.L. PROTECT.	Thermal
MOTOR SHEAVE	N/A
FAN SHEAVE	N/A
BELT(S)	N/A

TEST DATA

INITIAL RPM	VSC
FINAL RPM	VSC
EXTERNAL S.P.	N/A
MOTOR HZ	N/A
ACTUAL VOLTS	118
INITIAL AMPS	2.5
FINAL AMPS	2.5

NO.	AREA SERVED	TYPE	DESIGN	PRELIM.	FINAL
12A	Heat Removal	Ceiling Grille	1325	784	840

EXHAUST DATA	GRILLE	1325	784	840	63%
--------------	--------	------	-----	-----	-----

EXHAUST FAN (EF) DATA

PROJECT: Melink Corporation 1234

DATE: 7/13/2011

LOCATION: 5140 River Valley Road, Milford, OH 45150

**EF-13
Equipment Room #3 (Heat Removal)**

DESIGN DATA

EXTERNAL S.P.	N/A
FAN HP	N/A
VOLTS/PHASE	N/A

EQUIP. DATA

UNIT MFR.	Penn & Barry
• MODEL NO.	DX13R
• SERIAL NO.	F10CZ17320
FAN MOTOR	Fasco
• HP	1/6
• RPM	1550
• VOLTS/PHASE	115/1
• FLA	1.8
• O.L. PROTECT.	Thermal
MOTOR SHEAVE	N/A
FAN SHEAVE	N/A
BELT(S)	N/A

TEST DATA

INITIAL RPM	VSC
FINAL RPM	VSC
EXTERNAL S.P.	N/A
MOTOR HZ	N/A
ACTUAL VOLTS	118
INITIAL AMPS	1.6
FINAL AMPS	1.6

NO.	AREA SERVED	TYPE	DESIGN	PRELIM.	FINAL
13A	Heat Removal	Ceiling Grille	175	188	188

EXHAUST DATA	GRILLE	175	188	188
--------------	--------	-----	-----	-----

EXHAUST FAN (EF) DATA

PROJECT: Melink Corporation 1234

DATE: 7/13/2011

LOCATION: 5140 River Valley Road, Milford, OH 45150

EF-14

Equipment Room #1/AD Office/Invoicing

DESIGN DATA

EXTERNAL S.P.	N/A
FAN HP	N/A
VOLTS/PHASE	N/A

EQUIP. DATA

UNIT MFR.	Penn & Barry
• MODEL NO.	DX08B
• SERIAL NO.	D09TZ20568
FAN MOTOR	Fasco
• HP	1/4
• RPM	1550
• VOLTS/PHASE	115/1
• FLA	2.7
• O.L. PROTECT.	Thermal
MOTOR SHEAVE	1VL34 x 1/2"
FAN SHEAVE	3.5" x 3/4"
BELT(S)	3L210

TEST DATA

INITIAL RPM	N/A
FINAL RPM	N/A
EXTERNAL S.P.	N/A
MOTOR HZ	N/A
ACTUAL VOLTS	N/A
INITIAL AMPS	N/A
FINAL AMPS	N/A

NO.	AREA SERVED	TYPE	DESIGN	PRELIM.	FINAL
14A	UPC	Ceiling Grille	65	N/A	N/A
14B	Invoicing	Ceiling Grille	60	N/A	N/A
14C	AD Office	Ceiling Grille	60	N/A	N/A
14D	Managers Office	Ceiling Grille	30	N/A	N/A
14E	Electrical Room	Ceiling Grille	990	N/A	N/A

EXHAUST DATA	GRILLE	1205	N/A	N/A
--------------	--------	------	-----	-----

EXHAUST FAN (EF) DATA

PROJECT: Melink Corporation 1234

DATE: 7/13/2011

LOCATION: 5140 River Valley Road, Milford, OH 45150

EF-15 Equipment Room #2/Optical/Cash/Counting

DESIGN DATA

EXTERNAL S.P.	N/A
FAN HP	N/A
VOLTS/PHASE	N/A

EQUIP. DATA

UNIT MFR.	Penn & Barry
• MODEL NO.	DX13Q
• SERIAL NO.	F10CZ17322
FAN MOTOR	Fasco
• HP	1/4
• RPM	1725
• VOLTS/PHASE	115/1
• FLA	3.5
• O.L. PROTECT.	Thermal
MOTOR SHEAVE	N/A
FAN SHEAVE	N/A
BELT(S)	N/A

TEST DATA

INITIAL RPM	VSC
FINAL RPM	VSC
EXTERNAL S.P.	N/A
MOTOR HZ	N/A
ACTUAL VOLTS	118
INITIAL AMPS	2.9
FINAL AMPS	2.9

NO.	AREA SERVED	TYPE	DESIGN	PRELIM.	FINAL	
15A	Equipment Room 2	Ceiling Grille	600	459	542	90%
15B	Exam Room #1	Ceiling Grille	60	78	62	103%
15C	Contacts	Ceiling Grille	60	95	63	105%
15D	Pretest	Ceiling Grille	60	62	63	105%
15E	Exam Room #2	Ceiling Grille	60	68	65	108%
15F	Counting	Ceiling Grille	50	64	53	106%
15G	Cash	Ceiling Grille	50	83	52	104%

EXHAUST DATA	GRILLE	940	909	900	96%
--------------	--------	-----	-----	-----	-----

EXHAUST FAN (EF) DATA

PROJECT: Melink Corporation 1234

DATE: 7/13/2011

LOCATION: 5140 River Valley Road, Milford, OH 45150

EF-16 Customer Service/Photo Lab

DESIGN DATA

EXTERNAL S.P.	N/A
FAN HP	N/A
VOLTS/PHASE	N/A

EQUIP. DATA

UNIT MFR.	Penn & Barry
• MODEL NO.	DX11Q
• SERIAL NO.	F10CZ21419
FAN MOTOR	Fasco
• HP	1/5
• RPM	1725
• VOLTS/PHASE	115/1
• FLA	3
• O.L. PROTECT.	Thermal
MOTOR SHEAVE	N/A
FAN SHEAVE	N/A
BELT(S)	N/A

TEST DATA

INITIAL RPM	VSC
FINAL RPM	VSC
EXTERNAL S.P.	N/A
MOTOR HZ	N/A
ACTUAL VOLTS	118
INITIAL AMPS	3
FINAL AMPS	2.1

NO.	AREA SERVED	TYPE	DESIGN	PRELIM.	FINAL	
16A	Customer Service	Ceiling Grille	300	487	287	96%
16B	Photo Lab	Ceiling Grille	115	264	123	107%

EXHAUST DATA	GRILLE	415	751	410	99%
--------------	--------	-----	-----	-----	-----

EXHAUST FAN (EF) DATA

PROJECT: Melink Corporation 1234 **DATE:** 7/13/2011

LOCATION: 5140 River Valley Road, Milford, OH 45150

EF-17 *Breakroom/Money Center/Training*

DESIGN DATA

EXTERNAL S.P.	N/A
FAN HP	N/A
VOLTS/PHASE	N/A

EQUIP. DATA

UNIT MFR.	NA
• MODEL NO.	Inaccessible
• SERIAL NO.	"
FAN MOTOR	"
• HP	"
• RPM	"
• VOLTS/PHASE	"
• FLA	"
• O.L. PROTECT.	"
MOTOR SHEAVE	N/A
FAN SHEAVE	N/A
BELT(S)	N/A

TEST DATA

INITIAL RPM	VSC
FINAL RPM	VSC
EXTERNAL S.P.	N/A
MOTOR HZ	N/A
ACTUAL VOLTS	118
INITIAL AMPS	5
FINAL AMPS	3

NO.	AREA SERVED	TYPE	DESIGN	PRELIM.	FINAL	
17A	Breakroom	Ceiling Grille	525	1071	545	104%
17B	Money Center	Ceiling Grille	120	91	131	109%
17C	Training	Ceiling Grille	150	69	164	109%
17D	Personnel	Ceiling Grille	40	31	43	108%

EXHAUST DATA	GRILLE	835	1262	883	106%
--------------	--------	-----	------	-----	------

EXHAUST FAN (EF) DATA

PROJECT: Melink Corporation 1234

DATE: 7/13/2011

LOCATION: 5140 River Valley Road, Milford, OH 45150

EF-18 *Bakery*

DESIGN DATA

EXTERNAL S.P.	NA
FAN HP	NA
VOLTS/PHASE	NA

EQUIP. DATA

UNIT MFR.	Penn & Barry
• MODEL NO.	DX16R
• SERIAL NO.	F10CZ21421
FAN MOTOR	Fasco
• HP	1/3
• RPM	1550
• VOLTS/PHASE	115/1
• FLA	4
• O.L. PROTECT.	Thermal
MOTOR SHEAVE	N/A
FAN SHEAVE	N/A
BELT(S)	N/A

TEST DATA

INITIAL RPM	VSC
FINAL RPM	VSC
EXTERNAL S.P.	N/A
MOTOR HZ	N/A
ACTUAL VOLTS	118
INITIAL AMPS	5
FINAL AMPS	3.8

NO.	AREA SERVED	TYPE	DESIGN	PRELIM.	FINAL	
18A	Bakery	Ceiling Grille	540	823	594	110%
18B	Bakery	Ceiling Grille	570	530	532	93%
18C	Bakery	Ceiling Grille	360	550	392	109%

EXHAUST DATA	GRILLE	1470	1903	1518	103%
--------------	--------	------	------	------	------

EXHAUST FAN (EF) DATA

PROJECT: Melink Corporation 1234

DATE: 7/13/2011

LOCATION: 5140 River Valley Road, Milford, OH 45150

EF-19 *Stockroom/Meat Prep*

DESIGN DATA

EXTERNAL S.P.	NA
FAN HP	NA
VOLTS/PHASE	NA

EQUIP. DATA

UNIT MFR.	Penn & Barry
• MODEL NO.	DX13Q
• SERIAL NO.	F10CZ21420
FAN MOTOR	Fasco
• HP	1/4
• RPM	1725
• VOLTS/PHASE	115/1
• FLA	3.5
• O.L. PROTECT.	Thermal
MOTOR SHEAVE	N/A
FAN SHEAVE	N/A
BELT(S)	N/A

TEST DATA

INITIAL RPM	VSC
FINAL RPM	VSC
EXTERNAL S.P.	N/A
MOTOR HZ	N/A
ACTUAL VOLTS	118
INITIAL AMPS	3.5
FINAL AMPS	3.5

NO.	AREA SERVED	TYPE	DESIGN	PRELIM.	FINAL
19A	Stockroom	Ceiling Grille	300	770	329

EXHAUST DATA	GRILLE	300	770	329	110%
--------------	--------	-----	-----	-----	------

KITCHEN HOOD & ASSOCIATED EXHAUST FAN DATA

PROJECT: Melink Corporation 1234

DATE: 7/13/2011

LOCATION: 5140 River Valley Road, Milford, OH 45150

EFH1 *Deli Fryers*

DESIGN DATA

EXHAUST CFM	3800
EXTERNAL S.P.	N/A
FAN HP	NA
VOLTS/PHASE	NA

DESIGN DATA

HOOD MFR.	Captive Aire
• MODEL NO.	5424 ND-2
DUCT COLLAR SIZE.	14"

EQUIP. DATA

UNIT MFR.	Captive Aire
• MODEL NO.	NCA24HPFA
• SERIAL NO.	1105926
FAN MOTOR	WEG
• HP	2
• RPM	1710
• VOLTS/PHASE	208/3
• FLA	6
• O.L. PROTECT.	Thermal
MOTOR SHEAVE	(2) 4" x 5/8"
FAN SHEAVE	(2) 6.5" x 1"
BELT(S)	(2) BX28

EQUIP. DATA

HOOD MFR.	Captive Aire
• MODEL NO.	5430 ND-2
• SERIAL NO.	1105020
• HOOD TYPE	Exhaust Only
FILTER MFR.	Kleen-Gard
FILTER HEIGHT	20 "

TEST DATA

INITIAL RPM	922
FINAL RPM	922
EXTERNAL S.P.	N/A
MOTOR HZ	N/A
ACTUAL VOLTS	118
INITIAL AMPS	5.3
FINAL AMPS	5.3
EXHAUST CFM	3858

102%

TEST DATA

FILTER LG

-1-	-2-
16 "	
16 "	
20 "	
20 "	
20 "	
20 "	

VELOCITY

-1-	-2-
278	
287	
268	
263	
290	
269	

KITCHEN HOOD & ASSOCIATED EXHAUST FAN DATA

PROJECT: Melink Corporation 1234

DATE: 7/13/2011

LOCATION: 5140 River Valley Road, Milford, OH 45150

EFH2 *Deli Rotisseries*

DESIGN DATA

EXHAUST CFM	2430
EXTERNAL S.P.	N/A
FAN HP	N/A
VOLTS/PHASE	NA

EQUIP. DATA

UNIT MFR.	Captive Aire
• MODEL NO.	NCA14FA
• SERIAL NO.	1184174
FAN MOTOR	WEG
• HP	3/4
• RPM	1735
• VOLTS/PHASE	208/3
• FLA	2.6
• O.L. PROTECT.	Thermal
MOTOR SHEAVE	1VL40 x 5/8"
FAN SHEAVE	4.5 x 3/4"
BELT(S)	AX21

TEST DATA

INITIAL RPM	N/A
FINAL RPM	N/A
EXTERNAL S.P.	N/A
MOTOR HZ	N/A
ACTUAL VOLTS	N/A
INITIAL AMPS	N/A
FINAL AMPS	N/A
EXHAUST CFM	0

DESIGN DATA

HOOD MFR.	Captive Aire
• MODEL NO.	5430 ND-2
DUCT COLLAR SIZE.	16"

EQUIP. DATA

HOOD MFR.	Captive Aire
• MODEL NO.	5430 ND-2
• SERIAL NO.	1105020
• HOOD TYPE	Exhaust Only
FILTER MFR.	Kleen-Gard
FILTER HEIGHT	20 "

TEST DATA

FILTER LG		VELOCITY	
-1-	-2-	-1-	-2-
16 "			
16 "			
16 "			
20 "			
16 "			

KITCHEN HOOD & ASSOCIATED EXHAUST FAN DATA

PROJECT: Melink Corporation 1234

DATE: 7/13/2011

LOCATION: 5140 River Valley Road, Milford, OH 45150

EFH3 Pizza Oven

DESIGN DATA

EXHAUST CFM	1200
EXTERNAL S.P.	NA
FAN HP	NA
VOLTS/PHASE	NA

DESIGN DATA

HOOD MFR.	Captive Aire
• MODEL NO.	4824 ND-2
DUCT COLLAR SIZE.	12"

EQUIP. DATA

UNIT MFR.	Captive Aire
• MODEL NO.	NCA10FA
• SERIAL NO.	1184174
FAN MOTOR	WEG
• HP	1/2
• RPM	1730
• VOLTS/PHASE	208/3
• FLA	1.8
• O.L. PROTECT.	Thermal
MOTOR SHEAVE	1VL40 x 5/8"
FAN SHEAVE	AK54 x 3/4"
BELT(S)	AX22

EQUIP. DATA

HOOD MFR.	Captive Aire
• MODEL NO.	4824 ND-2
• SERIAL NO.	1105020
• HOOD TYPE	Exhaust Only
FILTER MFR.	Kleen-Gard
FILTER HEIGHT	16 "

TEST DATA

INITIAL RPM	1069
FINAL RPM	1069
EXTERNAL S.P.	N/A
MOTOR HZ	N/A
ACTUAL VOLTS	N/A
INITIAL AMPS	1.3
FINAL AMPS	1.3
EXHAUST CFM	1087

91%

TEST DATA

FILTER LG	
-1-	-2-
14 "	
16 "	
20 "	
16 "	

VELOCITY	
-1-	-2-
170	
179	
165	
159	

KITCHEN HOOD & ASSOCIATED EXHAUST FAN DATA

PROJECT: Melink Corporation 1234

DATE: 7/13/2011

LOCATION: 5140 River Valley Road, Milford, OH 45150

EFH1 Food Tenant (Fryers)

DESIGN DATA

EXHAUST CFM	1985
EXTERNAL S.P.	NA
FAN HP	NA
VOLTS/PHASE	NA

DESIGN DATA

HOOD MFR.	NA
• MODEL NO.	NA
DUCT COLLAR SIZE.	NA

EQUIP. DATA

UNIT MFR.	Greenheck
• MODEL NO.	CUBE14176
• SERIAL NO.	06F16492
FAN MOTOR	Marathon
• HP	3/4
• RPM	1725
• VOLTS/PHASE	115/1
• FLA	10
• O.L. PROTECT.	Thermal
MOTOR SHEAVE	1VP34 x 1/2"
FAN SHEAVE	AK34 x 3/4"
BELT(S)	4L220

EQUIP. DATA

HOOD MFR.	NA
• MODEL NO.	NA
• SERIAL NO.	NA
• HOOD TYPE	Exhaust Only
FILTER MFR.	NA
FILTER HEIGHT	20 "

TEST DATA

INITIAL RPM	884
FINAL RPM	884
EXTERNAL S.P.	N/A
MOTOR HZ	N/A
ACTUAL VOLTS	118
INITIAL AMPS	8.3
FINAL AMPS	8.3
EXHAUST CFM	2183

110%

TEST DATA

FILTER LG		VELOCITY	
-1-	-2-	-1-	-2-
16 "		298	
20 "		230	
20 "		185	
20 "		206	

KITCHEN HOOD & ASSOCIATED EXHAUST FAN DATA

PROJECT: Melink Corporation 1234

DATE: 7/13/2011

LOCATION: 5140 River Valley Road, Milford, OH 45150

EFH2 *Food Tenant (Oven)*

DESIGN DATA

EXHAUST CFM	1985
EXTERNAL S.P.	NA
FAN HP	NA
VOLTS/PHASE	NA

DESIGN DATA

HOOD MFR.	NA
• MODEL NO.	NA
DUCT COLLAR SIZE.	NA

EQUIP. DATA

UNIT MFR.	Penn & Barry
• MODEL NO.	FX14B
• SERIAL NO.	C10AS92213
FAN MOTOR	WEG
• HP	1
• RPM	1740
• VOLTS/PHASE	115/1
• FLA	14
• O.L. PROTECT.	Thermal
MOTOR SHEAVE	3.5 x 1/2"
FAN SHEAVE	5.5 x 3/4"
BELT(S)	4L230

EQUIP. DATA

HOOD MFR.	NA
• MODEL NO.	NA
• SERIAL NO.	NA
• HOOD TYPE	Exhaust Only
FILTER MFR.	NA
FILTER HEIGHT	20 "

TEST DATA

INITIAL RPM	908
FINAL RPM	908
EXTERNAL S.P.	N/A
MOTOR HZ	N/A
ACTUAL VOLTS	118
INITIAL AMPS	10.9
FINAL AMPS	10.9
EXHAUST CFM	1788

90%

TEST DATA

FILTER LG	
-1-	-2-
20 "	
20 "	
20 "	
16 "	

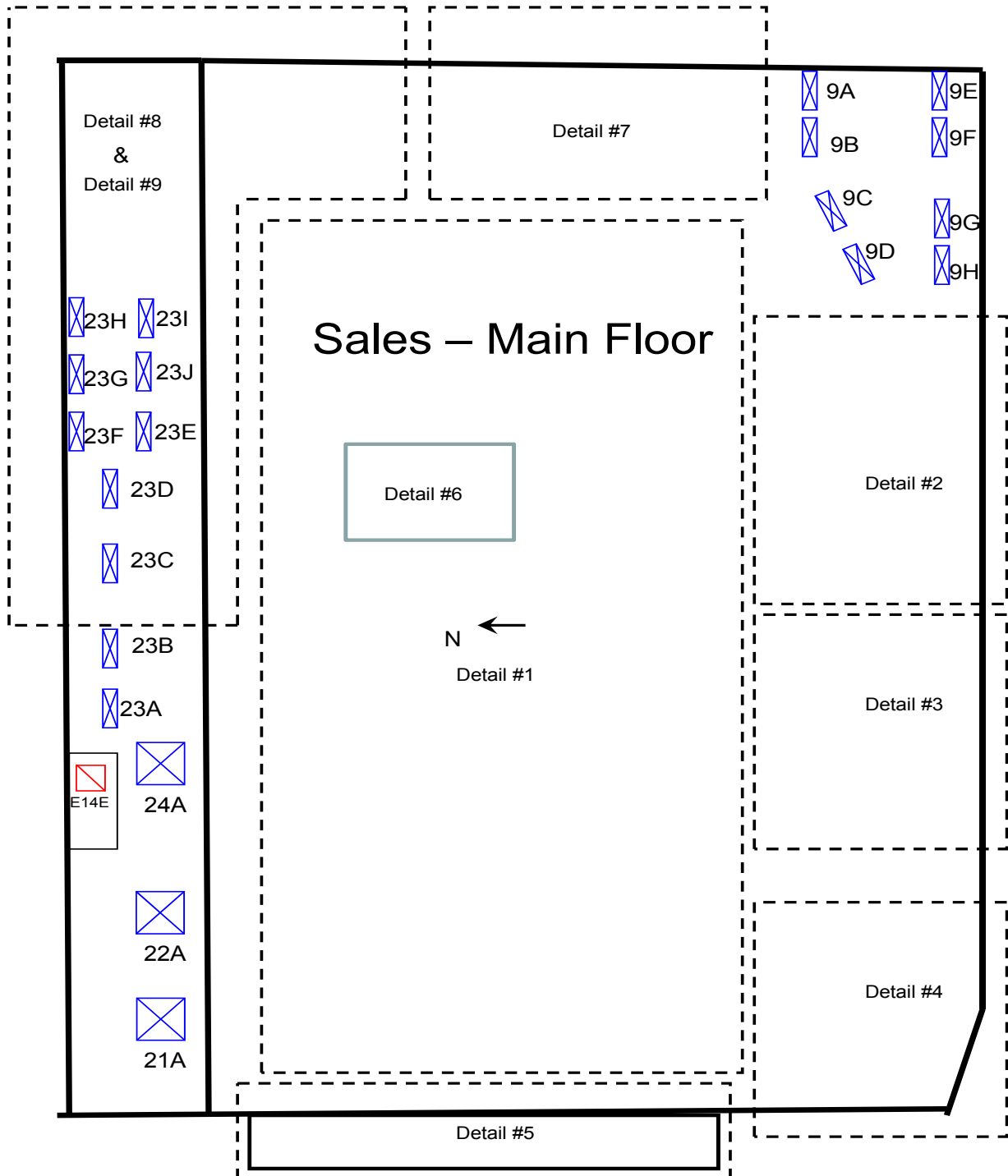
VELOCITY	
-1-	-2-
179	
168	
197	
209	

BUILDING AND ROOFTOP LAYOUT

PROJECT: Melink Corporation 1234

DATE: 7/13/2011

LOCATION: 5140 River Valley Road, Milford, OH 45150

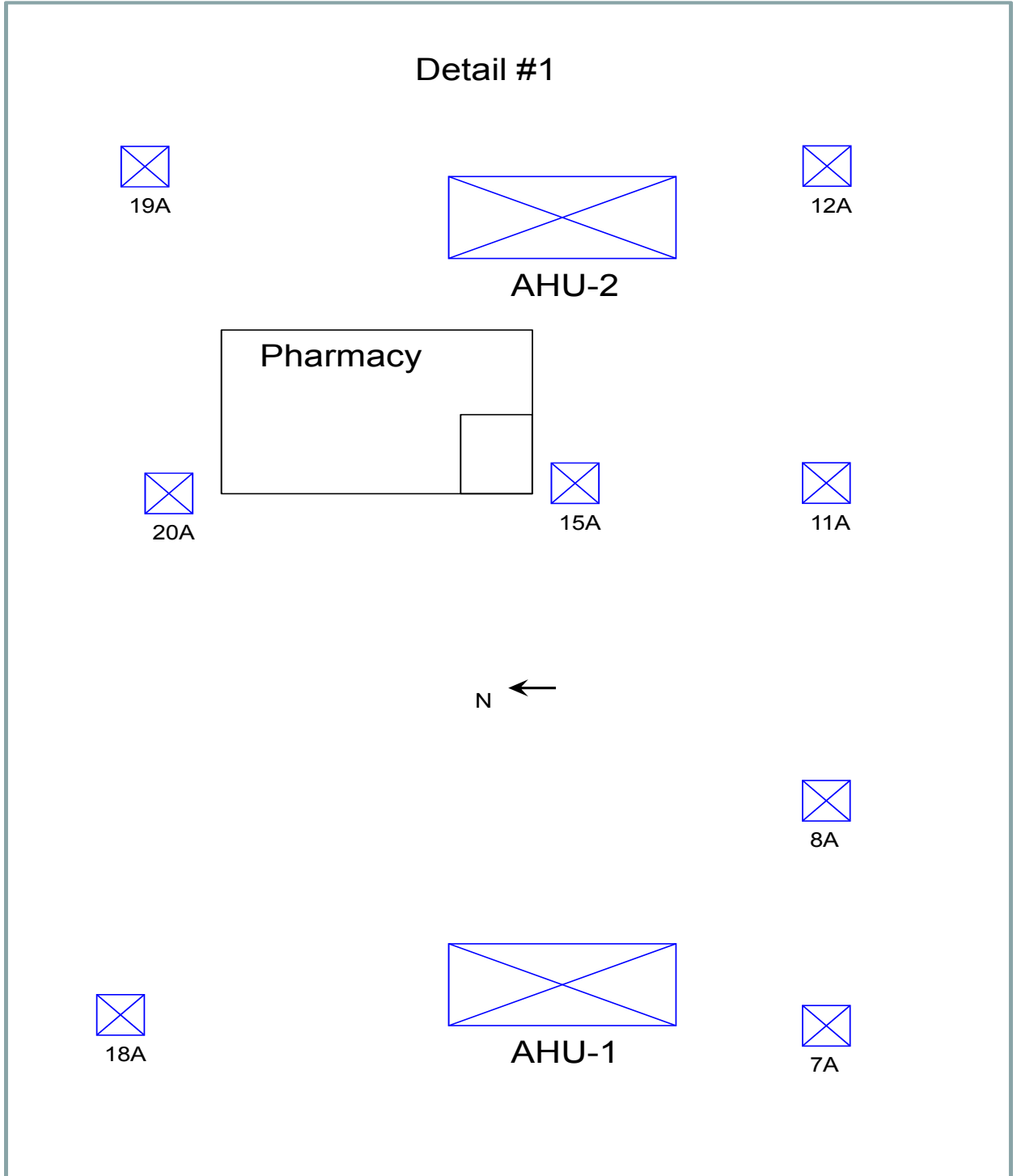


BUILDING AND ROOFTOP LAYOUT

PROJECT: Melink Corporation 1234

DATE: 7/13/2011

LOCATION: 5140 River Valley Road, Milford, OH 45150

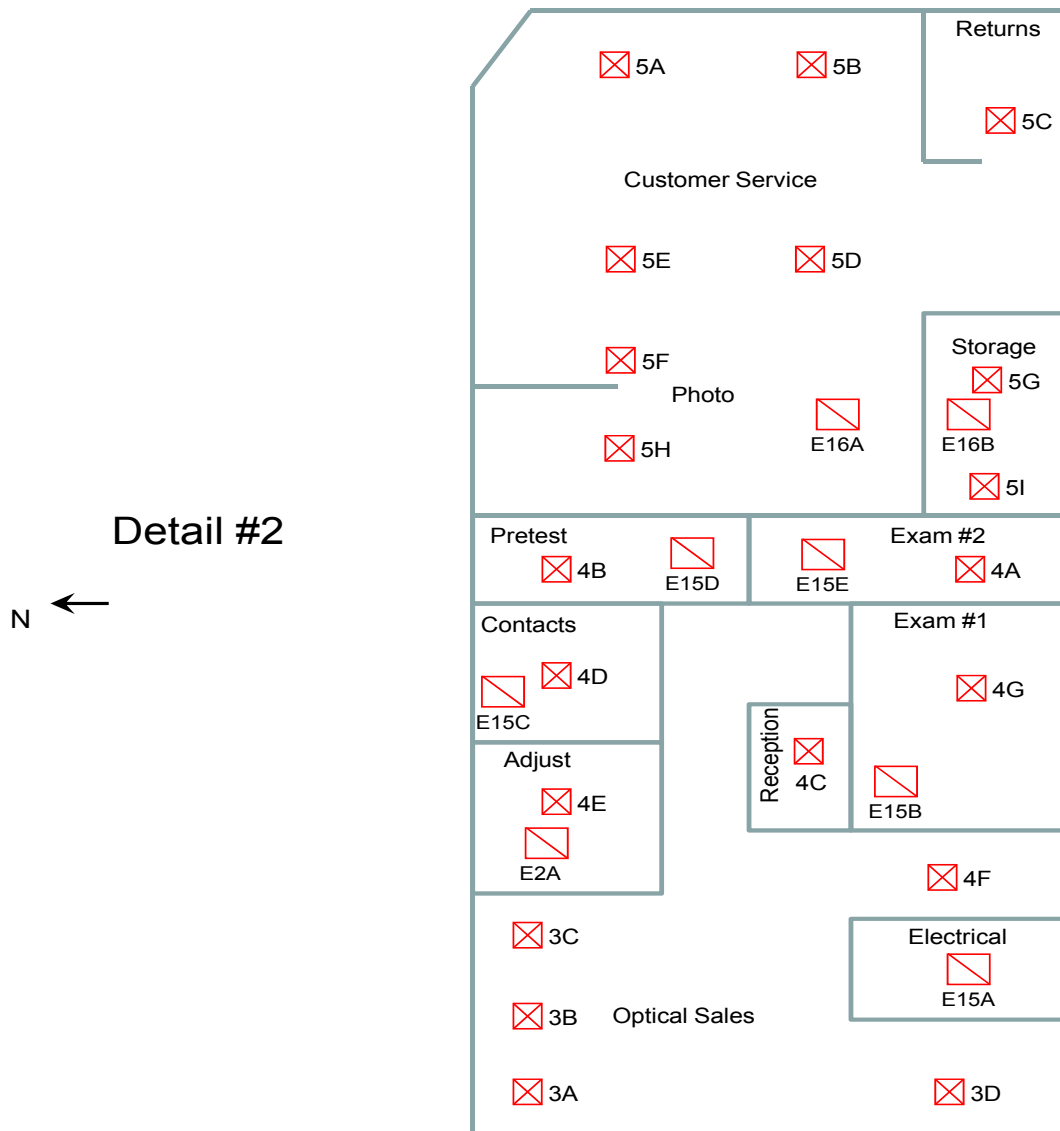


BUILDING AND ROOFTOP LAYOUT

PROJECT: Melink Corporation 1234

DATE: 7/13/2011

LOCATION: 5140 River Valley Road, Milford, OH 45150

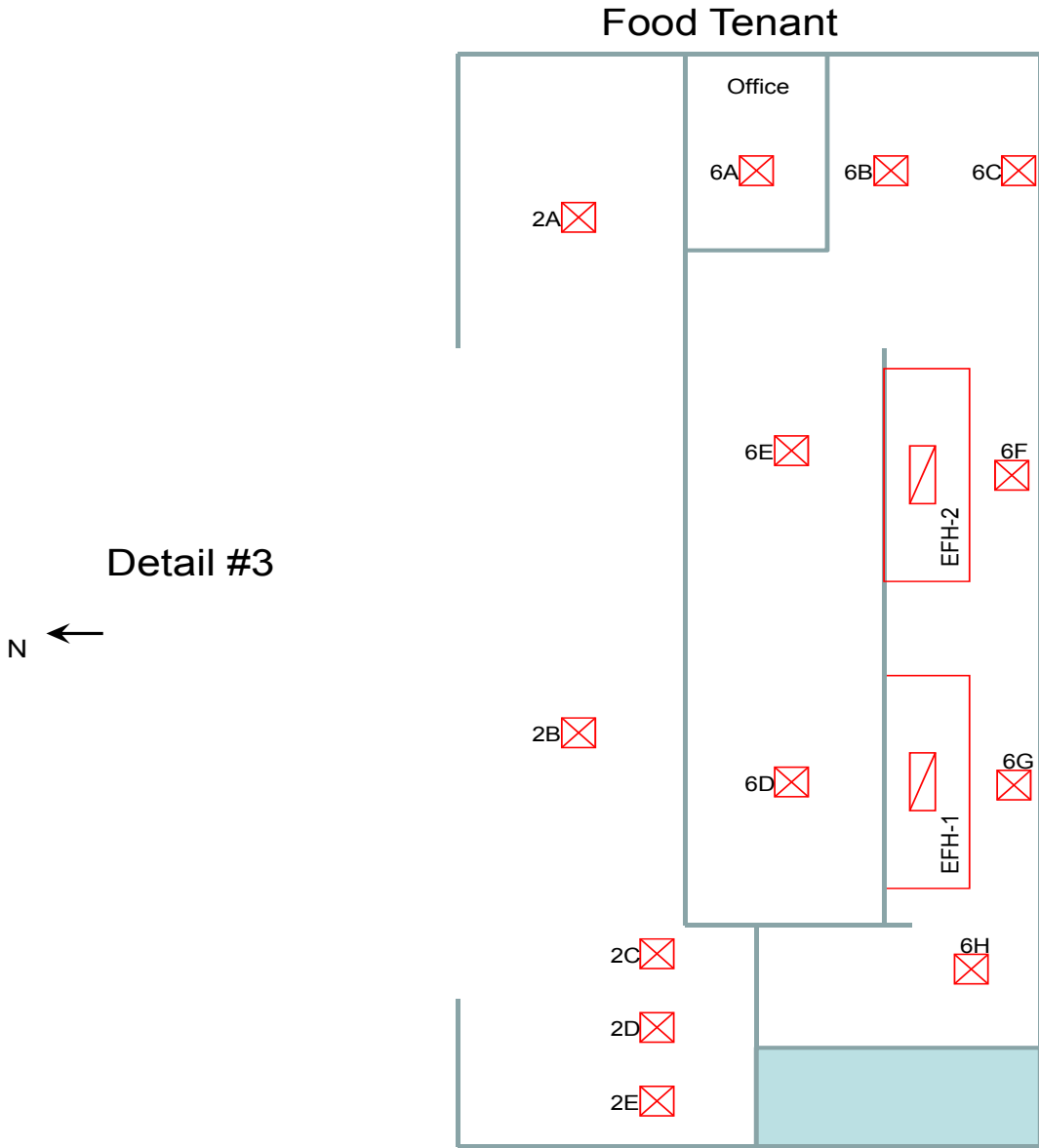


BUILDING AND ROOFTOP LAYOUT

PROJECT: Melink Corporation 1234

DATE: 7/13/2011

LOCATION: 5140 River Valley Road, Milford, OH 45150

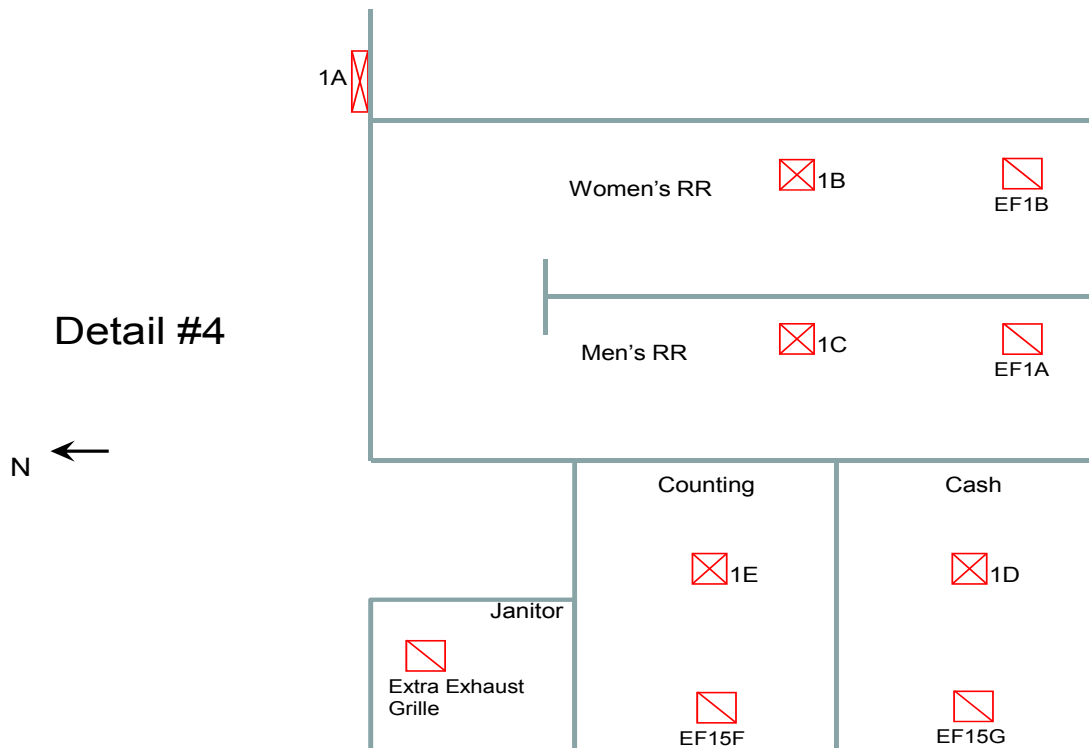


BUILDING AND ROOFTOP LAYOUT

PROJECT: Melink Corporation 1234

DATE: 7/13/2011

LOCATION: 5140 River Valley Road, Milford, OH 45150



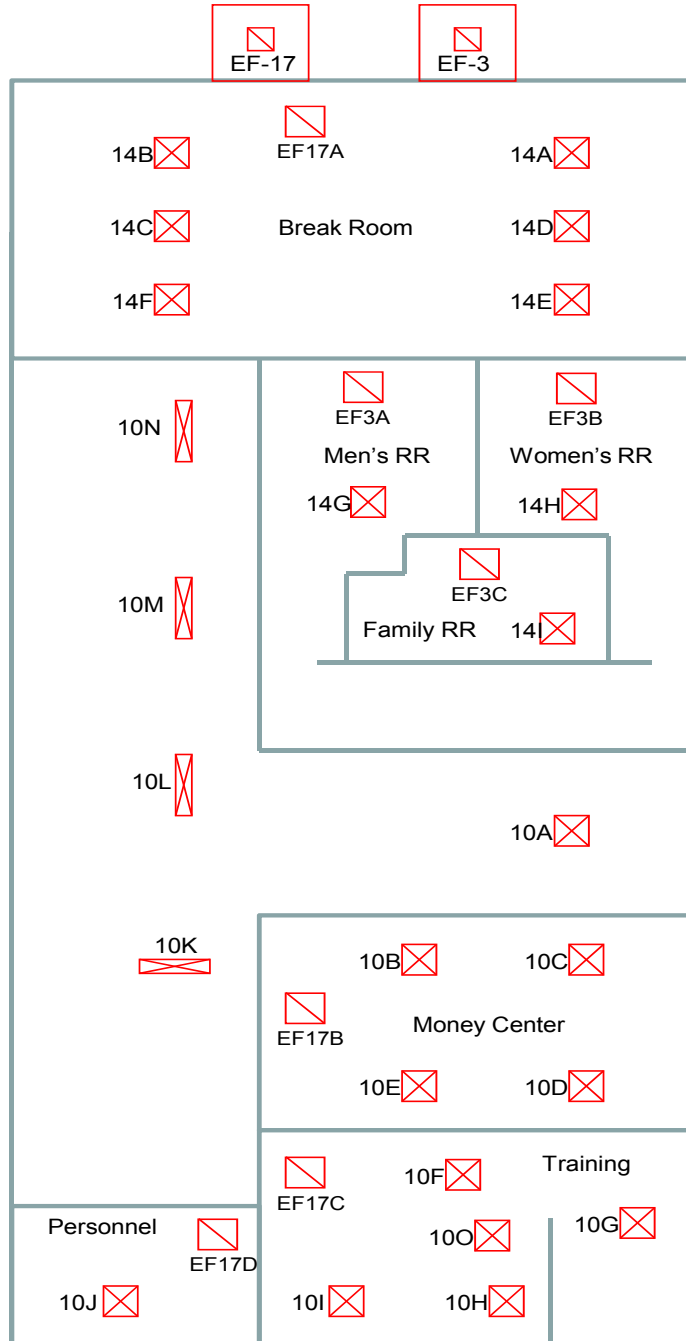
BUILDING AND ROOFTOP LAYOUT

PROJECT: Melink Corporation 1234

DATE: 7/13/2011

LOCATION: 5140 River Valley Road, Milford, OH 45150

Detail #5

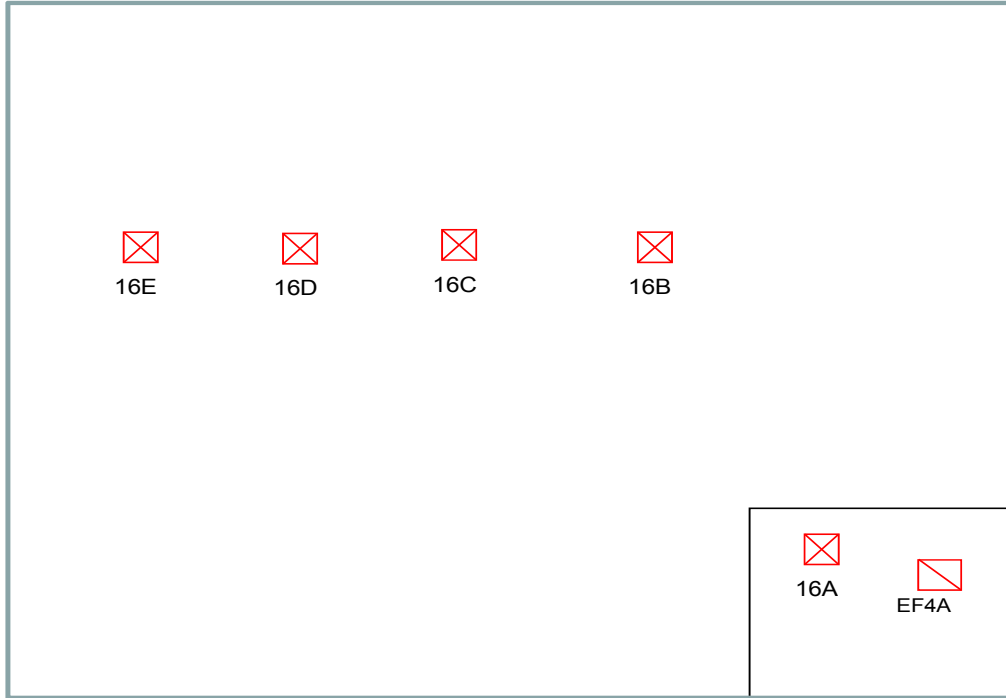


BUILDING AND ROOFTOP LAYOUT

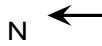
PROJECT: Melink Corporation 1234

DATE: 7/13/2011

LOCATION: 5140 River Valley Road, Milford, OH 45150



PHARMACY
Detail #6

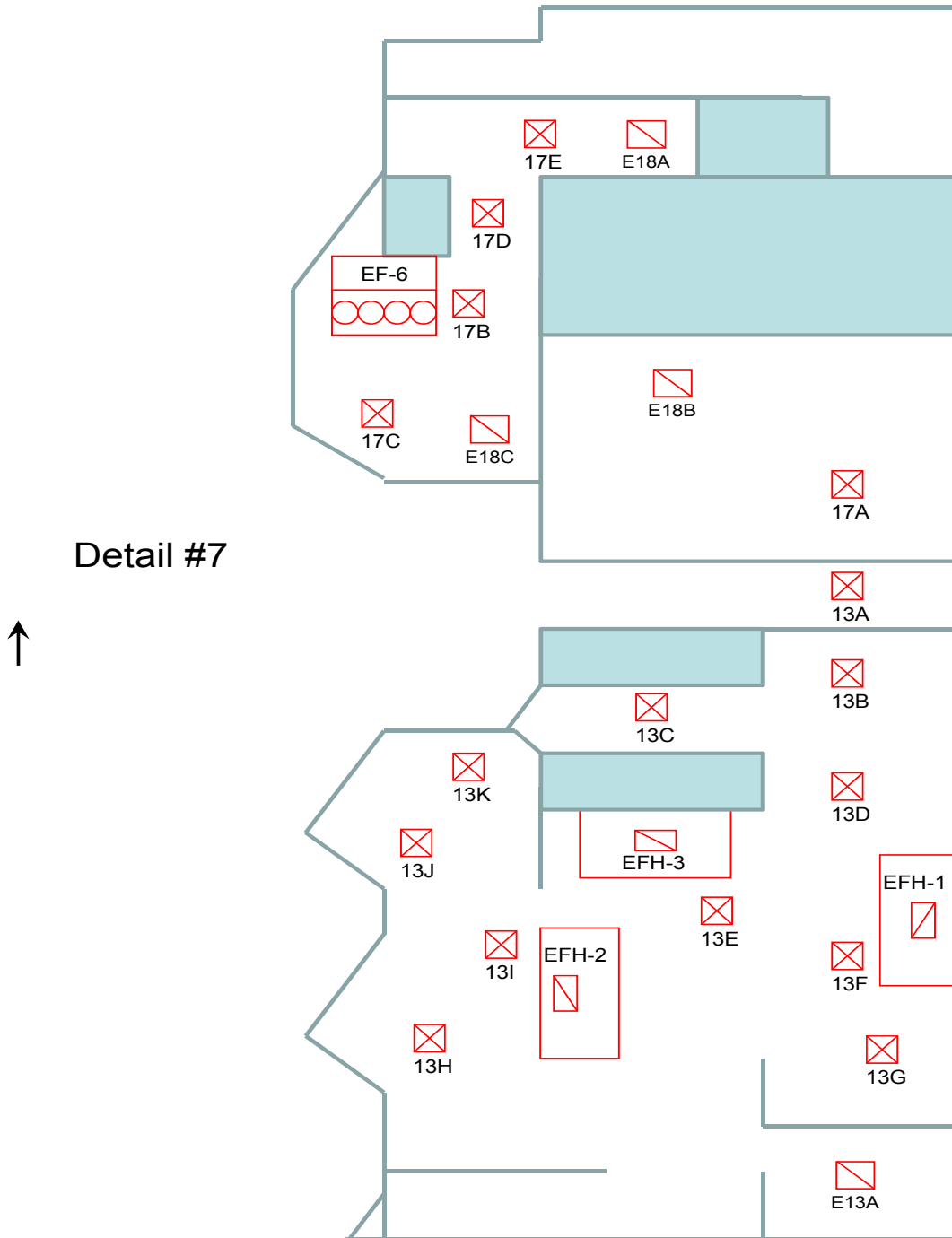


BUILDING AND ROOFTOP LAYOUT

PROJECT: Melink Corporation 1234

DATE: 7/13/2011

LOCATION: 5140 River Valley Road, Milford, OH 45150

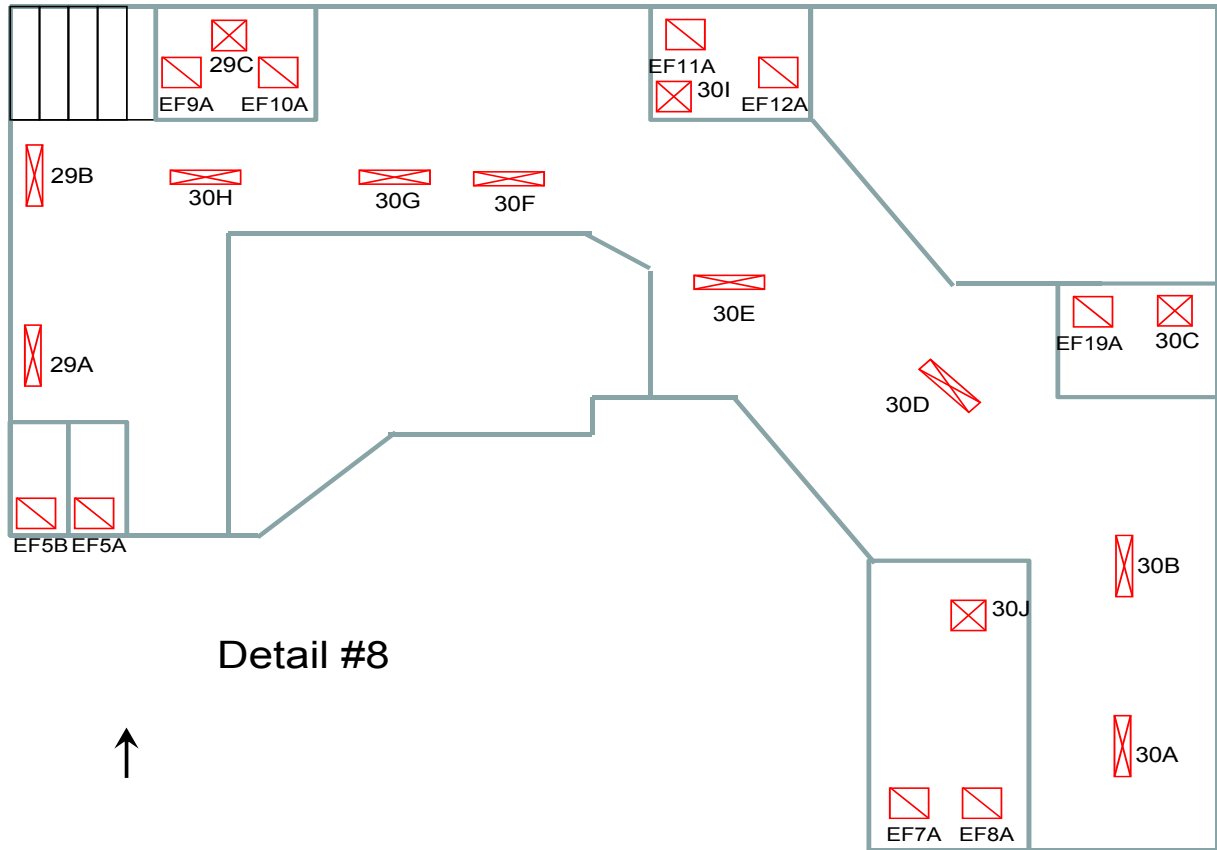


BUILDING AND ROOFTOP LAYOUT

PROJECT: Melink Corporation 1234

DATE: 7/13/2011

LOCATION: 5140 River Valley Road, Milford, OH 45150



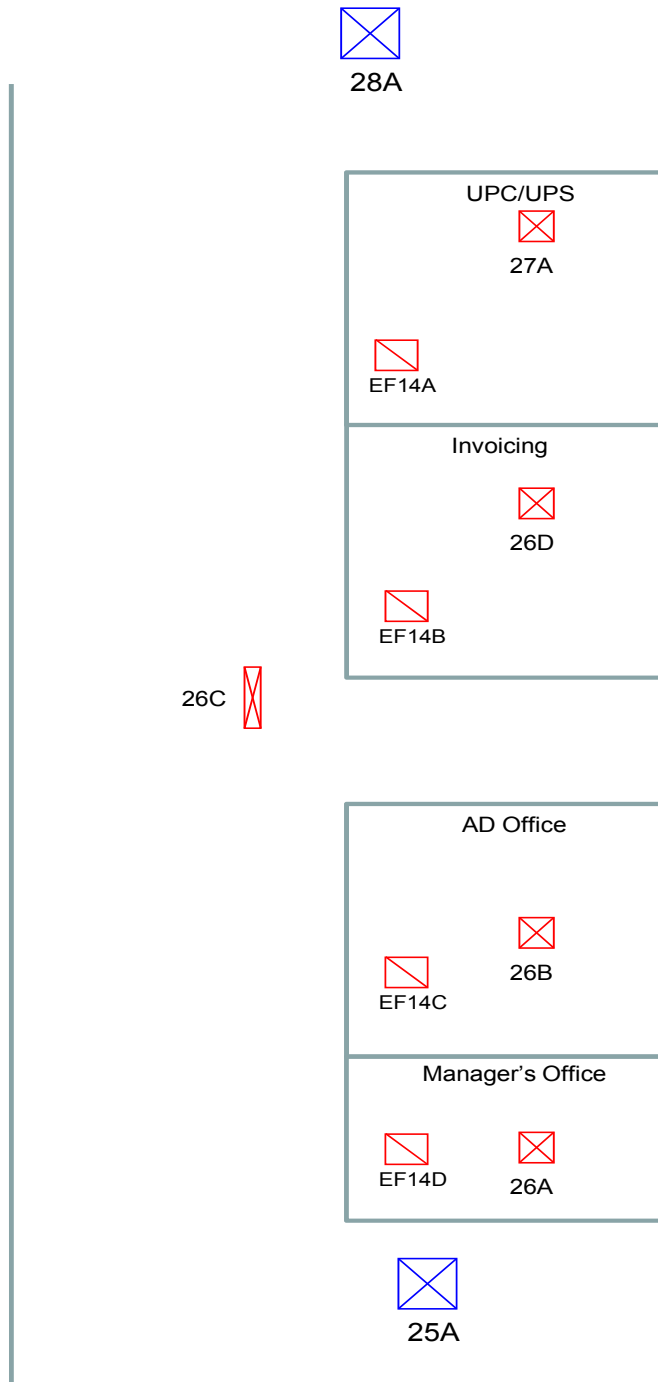
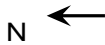
BUILDING AND ROOFTOP LAYOUT

PROJECT: Melink Corporation 1234

DATE: 7/13/2011

LOCATION: 5140 River Valley Road, Milford, OH 45150

Detail #9 (2nd Floor)



BUILDING AND ROOFTOP LAYOUT

PROJECT: Melink Corporation 1234

DATE: 7/13/2011

LOCATION: 5140 River Valley Road, Milford, OH 45150

